



CLIMATE *CHANGES* HEALTH:

Extreme Weather,
Vulnerable Populations
and the *Many Benefits*
of Taking Action

Year of Climate Change and Health Series



Follow the conversation on social media using the hashtag [#ClimateChangesHealth](https://twitter.com/ClimateChangesHealth). For more information on how climate change impacts health, please visit www.apha.org/climate.



Presenters



Natasha DeJarnett, PhD, MPH
Policy Analyst – Environmental Health
American Public Health Association
[@DrDeJarnett](#)



Peterson Toscano
Host, Citizens' Climate Radio podcast
www.petersontoscano.com
[@p2son](#)





Welcome

Year of Climate Change and Health

GOALS:

1. **Raise awareness** by educating members that climate change is a public health issue and not just an EH or environmental issue.
2. **Mobilize leaders** that are interested in climate change but have not started to take action.

MONTHLY THEMES:

January	Kick Off
February	Climate Justice & Health
March	Clean Energy
April	Transportation & Healthy Community Design
May	Air Quality, Lung and Heart Health
June	Mental Wellness and Resilience
July	Agriculture and Food Safety & Security
August	Water Quality
September	Extreme Weather
October	Vulnerable Populations, Focus on Children
November	Tribal and Indigenous Health
December	#ActOnClimate

Keep the conversation going on social media using [#ClimateChangesHealth](#) and follow [@PublicHealth](#) and [@EH_4_All](#)
Questions? Email us: environment@apha.org



Welcome

Year of Climate Change and Health

Visit www.apha.org/climate to learn more about how you can become a partner.



Keep the conversation going on social media using [#ClimateChangesHealth](https://twitter.com/ClimateChangesHealth) and follow [@PublicHealth](https://twitter.com/PublicHealth) and [@EH_4_All](https://twitter.com/EH_4_All)
Questions? Email us : environment@apha.org

EXTREME RAINFALL AND DROUGHT

EXPOSURES

- Severe storms
- Flooding
- Mold
- Wildfires



THREATS TO HEALTH

- Injuries
- Asthma
- Heart disease
- Mental health
- Death

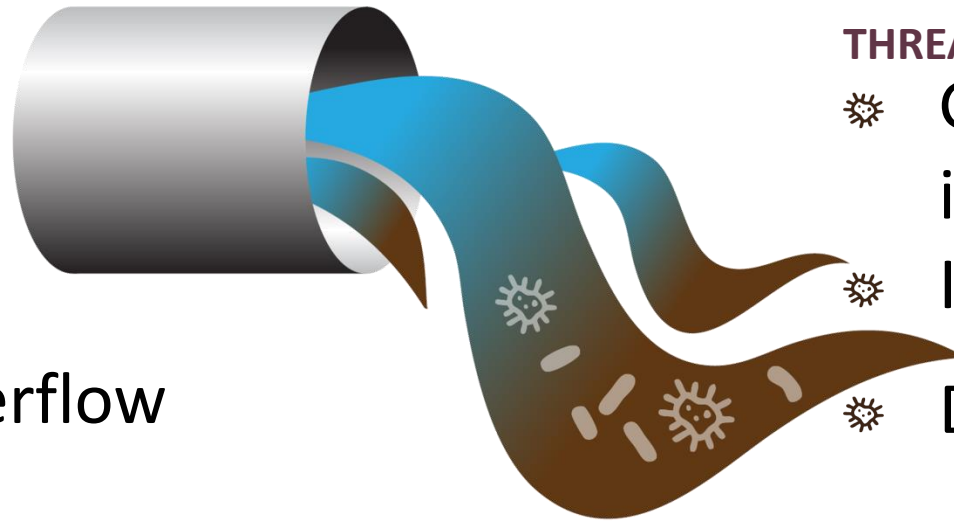
Climate Changes Health: Flooding

WARMER WATER AND FLOODING

INCREASE THE RISK OF ILLNESS AND INJURY

EXPOSURES

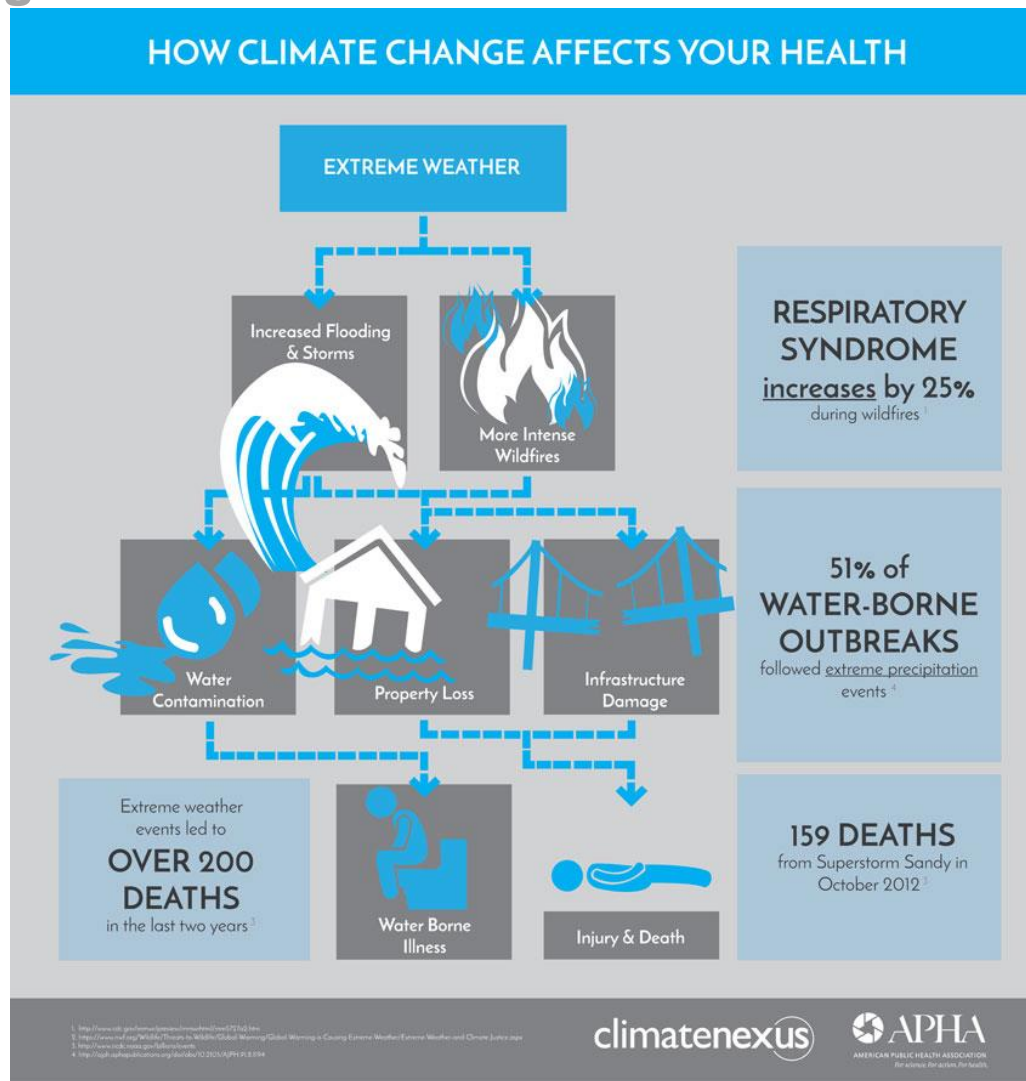
- ☼ Severe storms
- ☼ Flooding
- ☼ Stormwater overflow



THREATS TO HEALTH

- ☼ Gastrointestinal illness
- ☼ Injury
- ☼ Death

Climate Changes Health: Extreme Weather





Climate Changes Health: Vulnerable Populations

Extreme Weather and Justice

EXTREME WEATHER THREATS

- Increased intensity and severity
- Property loss
- Loss of access to services
- Job loss
- Displacement

VULNERABLE POPULATIONS

- Impoverished communities
- Communities of color
- Children
- Elderly
- Disabled
- Undocumented residents
- LGBTQ

Climate JUSTICE and Health