

Presenter



Colleen Moran, MPH, MS
Program Manager
Climate and Health Program
Wisconsin Department of Health Services





WISCONSIN CLIMATE AND HEALTH PROGRAM

APHA ADAPTATION IN ACTION WEBINAR PRESENTATION
THURSDAY, APRIL 26, 2018

Colleen Moran, M.P.H., M.S.
Climate and Health Program
Manager

colleen.moran@dhs.wisconsin.gov

BUREAU OF ENVIRONMENTAL AND OCCUPATIONAL
HEALTH
DIVISION OF PUBLIC HEALTH
WISCONSIN DEPARTMENT OF HEALTH SERVICES
<https://www.dhs.wisconsin.gov/climate>



ACCOMPLISHMENTS

**LOCAL PUBLIC
HEALTH**

CURRENT PROJECTS



ACCOMPLISHMENTS

BRACE 5 Step Framework

STEP 1: FORECASTING CLIMATE IMPACTS AND ASSESSING VULNERABILITIES

Climate and Health Profile Report

Wisconsin Heat Vulnerability Index

“Heat Vulnerability Index Mapping for Milwaukee and Wisconsin”

Flood Vulnerability Assessment

STEP 2: PROJECTING THE DISEASE BURDEN

Projected Heat-Related Mortality in Wisconsin

Manuscript about Climate Impacts on Gastrointestinal Illness in Wisconsin



STEP 3: ASSESSING PUBLIC HEALTH INTERVENTIONS

Extreme Heat

Drought

Wildfires

Pollen

Respiratory Illness from Air Pollution

Waterborne Disease

Mold

Harmful Algal Blooms

Carbon Monoxide Poisoning

Mosquitoborne Disease

Tickborne Disease

Extreme Weather Injury

Mental Health - Floods/Storms

Mental Health - Heat

STEP 4: DEVELOPING AND IMPLEMENTING A CLIMATE AND HEALTH ADAPTATION PLAN

Climate

Climate and Health Impacts in Wisconsin

Health Equity and Community Engagement

Climate and Health Adaptation Strategies – Completed and Ongoing

Climate and Health Adaptation Strategies – Emerging Issues

Success Stories

STEP #5: EVALUATING IMPACT AND IMPROVING QUALITY OF ACTIVITIES

BRACE Program Evaluation Report





LOCAL PUBLIC HEALTH

Local Health Agency Pilot
Projects
Extreme Weather Toolkits

LOCAL HEALTH DEPARTMENT PILOT PROJECTS

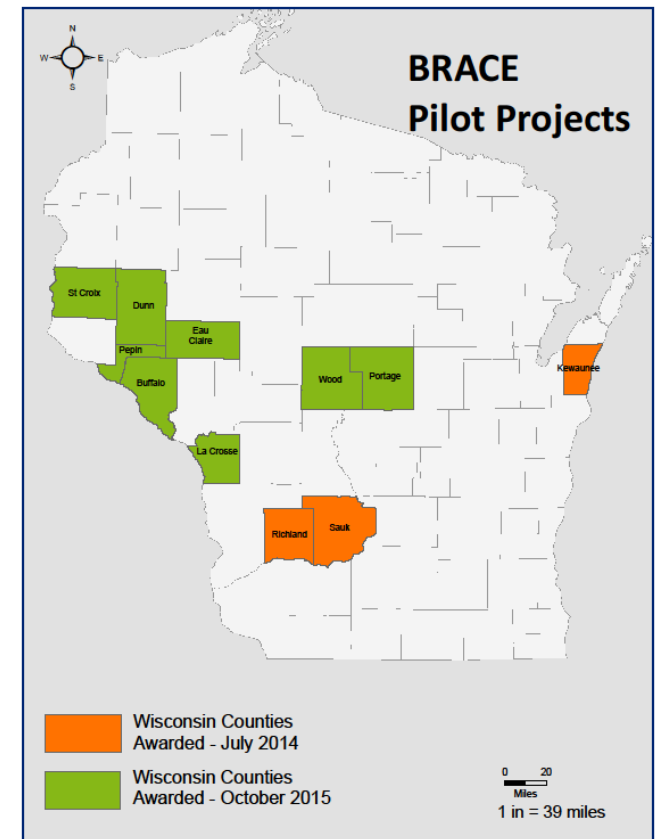
Community engagement process.

Develop adaptation strategies:

- Identify and prioritize local health impacts.
- Identify and prioritize strategies to address health impacts.
- Identify and prioritize action steps to implement strategies.

Tools:

- Wisconsin Climate and Health Community Engagement Toolkit



EXTREME WEATHER TOOLKITS

Audience:

- Local governments
- Local health departments

Objective:

- Preparing for and responding to different weather-related emergencies

- Extreme Heat
- Flood
- Winter Weather
- Wildfire
- Chemical Release

- Harmful Algal Bloom
- Drought
- Thunderstorms and Tornadoes
- Vectorborne Disease



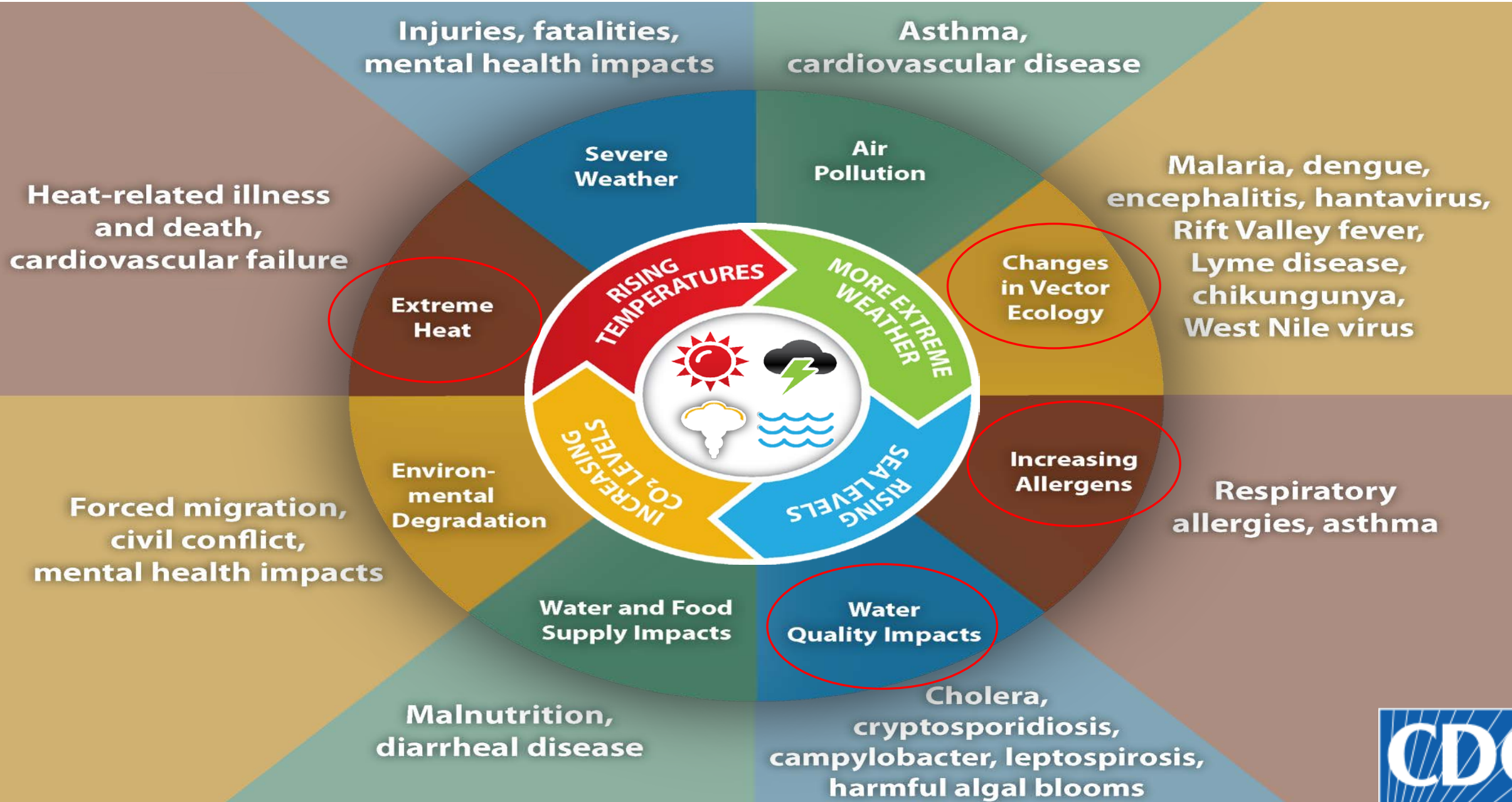
CURRENT PROJECTS

Exposure Pathways

Priority Populations

External Partner Teams

EXPOSURE PATHWAYS



A young girl with dark hair in a bun is lying in a hospital bed, looking towards the right. A woman in a blue scrubs top is leaning over her, smiling and holding her hand. A man in a red shirt is also leaning over, looking at the girl. The background shows a hospital room with a window and some medical equipment.


CLIMATE AND EXTREME WEATHER EVENTS ARE COMMUNITY HEALTH CONCERNS

Those most negatively impacted by weather and climate events: elders, very young, low socio-economic status, mental health issues, chronic diseases, and socially isolated.

Building resilience is a collaborative effort.

Emergency planning, preparedness, and response can help mitigate community health problems.

PRIORITY POPULATIONS

- 
- A diverse group of smiling people of various ages and ethnicities, including a woman with glasses and a green top, a man with glasses and a beard, a woman with blonde hair, a man with a beard and glasses, a woman with dark hair, a man with a beard and glasses, a woman with a black headscarf and glasses, a man with glasses and a beard, a woman with blonde hair, a man with glasses and a beard, a woman with dreadlocks, a man with a beard and glasses, and a man with a grey beard and a cap.
1. Those with low income
 2. Communities of color
 3. Immigrant groups (including those with limited English proficiency)
 4. Indigenous peoples
 5. Children and pregnant women
 6. Older adults
 7. Vulnerable occupational groups
 8. Persons with disabilities
 9. Persons with preexisting or chronic medical conditions

PRIORITY POPULATIONS: VULNERABILITY

Vulnerability to Climate Related Health Effects: the tendency or predisposition to be adversely affected by climate-related health effects - encompasses three elements:

1. Exposure
2. Sensitivity or susceptibility to harm
3. The capacity to adapt to or cope with change



CLIMATE AND HEALTH EXTERNAL PARTNER TEAMS

Health Equity Action
Team (HEAT)

Science Advisory
Group (SAG)

RESILIENCE

A photograph of two women kneeling in a garden bed, planting small green seedlings. The woman on the left is wearing a black and white striped shirt and glasses, while the woman on the right is wearing a light blue shirt. They are both focused on the task. In the background, there is a white fence and some trees. A green watering can and a shovel are visible on the ground to the right.

Planning and preparation for climate and weather

Building capacity within our communities

Protecting our most vulnerable citizens

ACKNOWLEDGEMENTS

DHS BRACE team:

- Colleen Moran, M.P.H, M.S. – Program Manager
- Megan Christenson, M.P.H., M.S. - Epidemiologist
- Haley Briel., M.S. Candidate - Intern
- Dr. Roy Irving, Ph.D. - Section Chief
- Dr. Jon Meiman, M.D. - Principal Investigator



COLLEEN MORAN, M.P.H., M.S.
CLIMATE AND HEALTH PROGRAM MANAGER
COLLEEN.MORAN@dhs.wisconsin.gov
(608)266-6761

BUREAU OF ENVIRONMENTAL AND
OCCUPATIONAL HEALTH
DIVISION OF PUBLIC HEALTH
WISCONSIN DEPARTMENT OF HEALTH SERVICES
<https://www.dhs.wisconsin.gov/climate/index.htm>