

Safeguarding Communities from Harmful Chemicals

ATSDR's Public Health Assessment Impacts:

- ➡ Support the need for **cleanup** actions.
- ➡ Allow **early** response to public health issues.
- ➡ Identify potential **exposure** pathways that need to be characterized.
- ➡ **Engage** local and state health departments.
- ➡ Give **advice** to residents and community leaders.
- ➡ Identify **new sites** or situations of health concern that may not fall under regulatory authority.
- ➡ Provide physician **education** and community **outreach**.

ATSDR works to stop and mitigate harmful chemical exposures and promote healthy environments for communities across the United States. ATSDR's Public Health Assessment (PHA) process is a key tool the agency uses to keep communities safe from potential and known hazards in the environment.

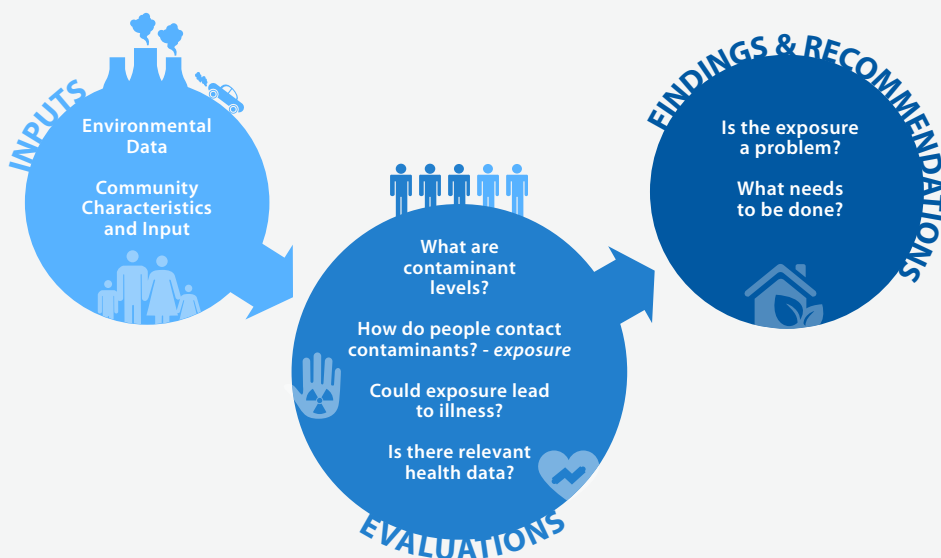
The PHA process evaluates the public health implications of exposures to environmental contamination, including hazardous chemicals found in the air, soil, sediment, water, and even at times in food.

Its objective is to find out:

- ➡ whether people have been, are being, or may be exposed to hazardous substances and, if so,
- ➡ whether that exposure is harmful, or potentially harmful, and should therefore be stopped or reduced.

This assessment work may be triggered by a site's listing on the National Priorities List or a specific request from a community member or another government agency.

The ATSDR Public Health Assessment process looks like this:

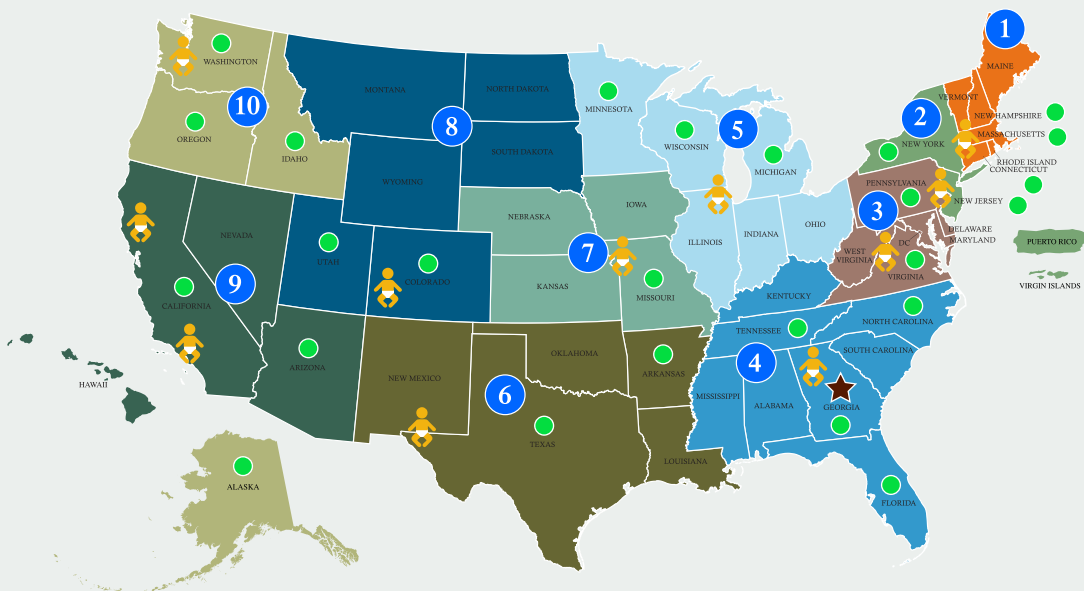


A Partner's Perspective:

ATSDR's 24 hour support during environmental emergencies can be particularly useful for EPA responders.

- Jack Kelly, On Scene Coordinator, EPA Region 3

Strengthening the Environmental Health Workforce Across the Nation



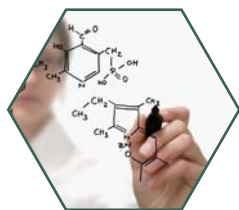
Protecting communities relies on a wide range of professional expertise:

- Toxicologists
- Health Assessors and Environmental Scientists
- Engineers and Physical Scientists
- Health Education and Communication Specialists
- Environmental Health Clinicians
- Epidemiologists

ATSDR provides on-the-ground, localized support to communities through the work of 400 Environmental Health Professionals located in

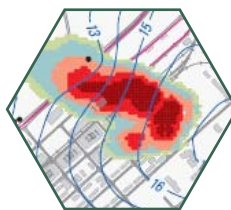
● 10 Regional Offices ● 25 State Public Health Departments ● 11 Pediatric Environmental Health Specialty Units ★ Headquarters

Advancing Environmental Health Science and Medicine



ToxProfiles™

ATSDR's ToxProfiles™ and associated resources provide comprehensive information on hundreds of chemicals for scientists, physicians and regulators. This information helps ATSDR determine when exposures in communities pose health risks.



Mapping, Modeling, and Lab Analysis

ATSDR uses state-of-the-art tools and resources like geospatial analysis and modelling to understand how people are exposed to chemicals from the environment. ATSDR also leverages resources available at the Centers for Disease Control and Prevention, like laboratory analysis, to answer community questions.



Environmental Medicine

In addition to educating health providers near the sites where we work, ATSDR provides training and resources to health providers across the country to help improve the diagnosis and treatment of environmentally-related illnesses.



Registries, Studies, and Surveillance

ATSDR is working to better understand the relationship between exposures and health outcomes, and the distribution of illnesses associated with environmental exposures. The results of these activities inform future assessments and decision-making to protect health.