

American Public Health Association
Annual Meeting and Exposition
November 6 – 10, 2010
Denver, CO



Occupational Health & Safety Section

Protecting Workplace Health and Safety

<http://www.apha.org/membersgroups/sections/aphasections/occupational/>

Agenda 2010

Description of photos

1 - A welder stands in his welding area, which is decorated with personal photos and memorabilia. A co-worker had been killed weeks prior when a worker came in contact with an ungrounded welding machine.
Photo courtesy of Peter Dooley.

2 – An Ecuadorean auto shop worker is cutting an asbestos brake pad without wearing any protection equipment. This is the case for many workers in Ecuador since asbestos brake pads are widely used, despite national and international efforts to ban all forms of asbestos.
Photo courtesy of Raul Harari and Homero Harari.

3 - Workers manually push a school bus to the next station of the assembly line. Besides the ergonomic hazards involved a serious injury had occurred when a worker was crushed between buses on the line.
Photo courtesy of Peter Dooley.

2010 APHA Occupational Health Section Leadership Roster

Chair (2010)

Kate McPhaul, PhD, MPH, BSN, RN
School of Nursing, University of
Maryland
Email: mcpaul@son.umaryland.edu

Secretary (2010)

Dorothy Wigmore, MS
Email: dorothyw@web.ca

Chairperson-Elect (2010)

Tim Morse, PhD, CPE
Professor, Community Medicine &
Health Care, UConn Health Center
Phone: 860-679-4720
Email: tmorse@nso.uhc.edu

Program Planning:

Sherry Baron, MD
Email: sherry.baron@cdc.hhs.gov

Mark D. Catlin, BS, BA
Email: mark.catlin@seiu.org

Peter Dooley, MS, CIH, CSP
Email: laborsafe@aol.com

Homero Harari, MS
Email:
Homero_Harari@student.uml.edu

Lina Lander, ScD
Email: llander@unmc.edu

Celeste Monforton
Email:
celeste.monforton@gwumc.edu

Kerry Souza, ScD, MPH
Email: hkv4@cdc.gov

Immediate Past Chair (2009)

Celeste Monforton, DrPH, MPH.
Dept of Environmental &
Occupational Health, School of
Public Health,
George Washington University.
Phone: 202-994-0774.
Email:
celeste.monforton@gwumc.edu

Immediate Past Chair (2008)

Robert Harrison, MD, MPH.
Occupational and Environmental
Medicine, UC San Francisco.
Phone: 415-885-7580.
Email: rharris@itsa.ucsf.edu

Secretary-Elect (2010)

Nancy Menzel, PhD, RN
Email: Nancy.Menzel@unlv.edu

Governing Counselors

Wendy Hord (2010-2011)
Email: whord@nysutmail.org

Rachel Rubin, MD, MPH (2009-2010).
Email: rrubin@uic.edu

Craig Slatin, ScD, MPH (2009-2010)
Email: craig_slatin@uml.edu

Membership Committee

Amy K. Liebman, MPH (2010-2012)
Email: aliebman@migrantclinician.org

Vidisha Parasram, MPH
Email: vidisha.parasram@gmail.com

Policy Committee

Chair: Mary Miller, RN, MN.
Email: marymill@uw.edu;
miller.mary@dol.gov

Janie Gittleman

Email: JGittleman@cpwr.com

Scholarship Committee

Karen Mulloy
Email: Karen.mulloy@dhha.org

Andrea Kidd-Taylor

Email: akiddtay@aol.com

**Occupational Health Disparities
Institute**

Amy Liebman
Email: aliebman@migrantclinician.org

Kerry Souza

Email: hkv4@cdc.gov

Listserv Coordinator

Amy Liebman
Email: aliebman@migrantclinician.org

Industrial Hygiene Committee

Walter Jones
Email: wjones@lhsfna.org

Section Council

Lezah Brown-Ellington
Email: lbrowne@ilstu.edu

Diane Bush

Email: dbush@berkeley.edu

Angela Laramie

Email: angela.laramie@state.ma.us

Amy Liebman

Email: aliebman@migrantclinician.org

Awards Committee

Peter Dooley
Email: laborsafe@aol.com

Chrissy Morgan

Email: thatlittleblonde@gmail.com

Newsletter Coordinator

Angela Laramie
Email: angela.laramie@state.ma.us

Website Coordinator

Bradley King
Email: Bradley.King@cdc.hhs.gov

Welcome to the OHS 2010 Program!

On behalf of the OHS Leadership, we invite you to participate in the 2010 APHA Meeting and the OHS Section Program. We are very excited about the planned events in this year's meeting and look forward to having this meeting advance our field so that we move to health and safety rights for all workers.

We especially want to welcome participants who might be participating in the Meeting for the first time. We have over 260 presenters in this year's meeting in Poster, Oral and Roundtable sessions*. We urge you to review the session outlined in this program and participate in as many as possible to gain the most from your APHA experience.

Please join us at our numerous events in addition to the technical sessions. Our membership/business meetings [212.0] provide a great opportunity to meet section members and hear about the great work of the section. For newcomers, our orientation meeting [2046.0] is an informative session to learn about the APHA Processes and OHS section Activities. Other events to note are the OHS Social [Sunday 6pm -8pm], the Awards lunch [Session 4128.0] and the OHS Party [Tuesday 8pm-12am].

Please feel free to ask any of the leadership for help and enjoy your meeting.

The Planning Committee

* For additional information about the timing and structure of the Roundtable Sessions, please see the note after the last session in this handout.

Saturday, November 6, 2010

SPECIAL EVENT!

9:30 AM-6:00 PM

2010 Health and Safety Summit

Moderator: Peter Dooley, MS, CIH, CSP, LaborSafe

Colorado Convention Center - Room 603

A New Era for Safety and Health Activism

- Organized by **Protecting Workers Alliance** to bring together activists from Labor, Public Health, Environmental, Family Rights, Immigrant Rights and COSH groups
- Maximize the current momentum to develop a common strategy for policy change
- Discussions will include
 - Legislative update: What we can do to strengthen worker protections under OSHA
 - Advocacy related to Ergonomic Standards and immigrant workers
 - Promotion of rights for victims and families

Special Lunch Session: OSHA in the New Era

Sunday, November 7, 2010

7:30 AM – 9:30 AM

AOEC Continental Breakfast

*Colorado Convention Center - Korbel Ballroom 2A
(Same room Membership meeting)*

The Association of Occupational and Environmental Clinics (AOEC) invites OHS members to their informal '**Get Acquainted' Breakfast**', Sunday, Nov. 7, 7:30 a.m.-9:30 a.m. in Korbel Ballroom 2A of the Colorado Convention Center. A continental breakfast will be served. No formal program is planned, it's a chance to 'meet and greet', see old colleagues, grab a quick breakfast and start the day in a more pleasant way. **Open to all.** AOEC staff will be on hand to answer any questions you may have about their organization's projects and activities.

8:30 AM – 11:30 AM

212.0 Membership/Business Meeting - All Welcome!

Colorado Convention Center - Korbel Ballroom 2A

Moderator: K. McPhaul, PhD, MPH, RN

This session will provide an overview to the entire meeting and is an important way to be acquainted with the OHS section and fellow members. Do not miss this important start to the 2010 meeting!

Sunday, November 7, 2010

11:30 AM – 2:30 PM

Committee Meetings

Colorado Convention Center - Korbel Ballroom 2A

- IH committee
- Young Worker Health and Safety Network committee
- Skit committee

2:00 PM -

Holding Mother Earth Sacred Exhibit Opening

Earl Dotter and Cindy Becnel
Booth 1786 Exhibit Hall
Organized by OHS Section with NAANNH Caucus

**The exhibit will be open from Sunday November 7 at 2pm until
Wednesday November 10 at 12pm.**

Sunday, November 7, 2010

2:30 PM - 3:30 PM

**2031.0 – Concurrent Poster Session. Occupational Health and Safety
Posters I**

Colorado Convention Center - Halls A/B

Board 1 — *Federal Motor Carrier Safety Administration's Medical Standards Update and Development Program: Turning Evidence into Policy.* **S. J. Tregear, DPhil** and J. R. Williams, PhD, MPH, RN

Board 2 — *Federal Motor Carrier Safety Administration's Medical Standards Update and Development Program: Development and Findings of Systematic Reviews of the Best-Available Evidence.* **J. R. Williams, PhD, MPH, RN** and S. J. Tregear, DPhil

Board 3 — *Federal Motor Carrier Safety Administration's Medical Standards Update and Development Program: Turning Evidence into Recommendations – Role of Medical Expert Panels and the Medical Review Board.* **S. J. Tregear, DPhil** and J. R. Williams, PhD, MPH, RN

Board 4 — *Seasonal influenza vaccination in VA healthcare facilities: Messages and approaches for clinical and nonclinical staff.* **P. Hirsch, NP-C, MED, MS**, R. Ledsky, MBA, T. Knighton, EdS, LPC, J. Pritchett, MS, L. Tensuan, RN, BSN, and J. Durfee, RN/MSN/APRN

Board 5 — *Teacher perceptions of the classroom environment: A survey of school teachers in New York State (NYS) Public Schools, 2009.* **C. Kielb, MS**, S. Lin, PhD, A. Orsini, MPH, N. Muscatiello, MS, J. Rogers-Harrington, and W. Hord

Board 6 — *Exploring cultural attitudes on smoking in construction trade workers.* **J. R. Strickland, MA**, C. M. Casey, MPH, N. Caito, MPH, MS, RD, LD, N. Six, BA, and B. Evanoff, MD, MPH

Board 7 — *Environmental Management in the Public Administration.* **P. González de la Flor, MD, PhD**, J. L. Navarro Espigares, PhD, Prof, Mgr, J. M. Jover Casas, MD, R. Carmona Vigo, Dr. and J. A. Martín Segura, PhD, Prof

Board 8 — *Opportunities for studying extension of workplace findings of occupational cancer into the community.* **M. Karstadt, PhD** and A. Frank, MD PhD

Board 9 — *Apples and Oranges of "Validated" Sampling and Analytical Methods.* **D. Lillquist, PhD, MSPH, CIH**

2:30 PM - 3:30 PM

**2032.0 – Concurrent Poster Session. Occupational Health and Safety
Posters: Health effects research**

Colorado Convention Center - Halls A/B

Board 1 — *Depressive symptoms among pork-processing workers in the Midwest.* **L. Lander, ScD**, G. S. Sorock, PhD, T. L. Stentz, PhD, M. Euler, K. Herstein, M. A. Mittleman, DrPH, R. Hauser, ScD, and M. J. Perry, ScD

Board 2 — *Risk Factors for University Student Employee Injury* . **J. Ou, BS, MPH-c**

Board 3 — *Association between ILO profusion score and exposures among former nuclear weapons workers.* **M. Mikulski, MD, MPH**, V. Clottey, MD, MPH, Z. Wang, J. K. Welch, MPH, P. Hartley, MD, MPH, N. Sprince, MD, and L. Fuortes, MD, MS

Board 4 — *Health Care Workers – Relationship between the Use of Latex and Chemicals such as glutaraldehyde and Asthma.* **D. V. Dillikar, MPH**, S. P. Potdar, S. Rubeen, M. A. Melchior, MPH, and J. Gasana, MD PhD

Board 5 — *Relative effects of coping and occupational stressors on occupational injury, illness or assault.* **L. P. Brown-Ellington, PhD** and K. Rospenda, PhD

Board 6 — *Asthma among Forest Workers, Carpenters, Cabinet makers from Wood Dust: A Meta-analysis.* **S. Rubeen, MD**, D. Dillikar, MPH Student, I. Prasadh, MD, M. A. Melchior, MPH, and J. Gasana, MD PhD

Board 7 — *Meta-analysis of Occupational Asthma among Carpet Makers.* S. P. Potdar, MPH, **D. Dillikar, MPH Student**, I. Prasadh, MD, S. Rubeen, MD, M. A. Melchior, MPH, and J. Gasana, MD PhD

Board 8 — *Occupational asthma due to exposure to animal proteins in animal handlers.* A. Mendy, MD, **A. Nnadi, MD**, M. A. Melchior, MPH, and J. Gasana, MD PhD

Board 9 — *Meta-analysis of spray paint exposure in auto body shops and occupational asthma.* **N. Applrys, BS**, C. Giraneza, BS, M. A. Melchior, MPH, and J. Gasana, MD PhD

Board 10 — *Occupational Asthma: Risk for Hairdressers and Salon Professionals: A Meta-analysis.* **A. Nugent, BS**, Y. Palma, BS, M. A. Melchior, MPH, and J. Gasana, MD PhD

2:30 PM - 3:30 PM

2033.0 – Concurrent Poster Session. Occupational Health and Safety Posters – Surveillance

Colorado Convention Center - Halls A/B

Board 1 — Prevalence and Trends of Rheumatic Diseases in the US Workforce **A. J. Caban-Martinez, MPH**, L. E. Fleming, MD, PhD, D. J. Lee, PhD; K. L. Arheart, EdD, K. E. McCollister, PhD, P. Muennig, MD, MPH, T. Clarke, MPH, MS and J. K. Kish, MPH

Board 2 — Health Status of the Aging US Healthcare Workforce **D. J. Lee, PhD**, L. E. Fleming, MD, PhD, W. G. LeBlanc, PhD, K. L. Arheart, EdD, K. F. Ferraro, PhD, C. Muntaner, MD, PhD, S. L. Christ, MS, A. J. Caban-Martinez, MPH, E. Davila, PhD and F. C. Bandiera, MPH.

Board 3 — BLS Construction Surveillance Data **E. Rogers, MSc**

Board 4 — Death certificate cause of death by industry and occupation in New Hampshire, 1995-2006: A standardized proportional mortality ratio study **D. L. Skinner, MA, MBA**, S. Cherala, MD MPH and K. R. Armenti, ScD

Board 5 — Estimated national burden of physical ergonomic hazards among US workers **S. Tak, ScD** and G. M. Calvert, MD, MPH

Board 6 — Prevalence of respirator use among farm operators in the U.S., 2006 **G. Syamlal, MBBS, MPH**, P. Schleiff, MS, J. M. Mazurek, MD, MS, PhD, M. Greskevitch, BS, G. Kullman, PhD, CIH and B. Doney, MPH, CIH

Board 7 — Stress and Obesity in Public Safety Employees **S. Ramey, PhD, RN**

Board 8 — Prevalence of the metabolic Syndrome among US workers: NHANES 1999-2004 **E. P. Davila, PhD**, L. E. Fleming, MD, PhD, H. Florez, PhD, MD, W. G. LeBlanc, PhD, A. J. Caban-Martinez, MPH, K. L. Arheart, EdD, K. E. McCollister, PhD, E. Goodman, MD, S. L. Christ, PhD and J. D. Clark, PhD

Board 9 — Safety at 2009 mass vaccination clinics, compared with 2003–2009 standard vaccination clinics — Tri-County (Denver metropolitan region), Colorado **N. Williams, MD MPH**, R. L. Vogt, MD and T. Ghosh, MD, MPH

2:30 PM - 3:30 PM

2034.0 – Concurrent Poster Session. Occupational Health and Safety Posters II

Colorado Convention Center - Halls A/B

Board 1 — *Smoking in Construction Workers: A Study Using the 2006-2007 Current Population Survey-Tobacco Use Supplement.* **D. C. Ham, MPH**, T. R. Przybeck, PhD, J. R. Strickland, MA, L. J. Bierut, MD, and B. A. Evanoff, MD, MPH

Board 2 — *History of Occupational Safety and Health: What Led to the Creation of NIOSH?* **S. Afanuh, MA**

Board 3 — *Barriers to blue collar worker utilization of employer sponsored smoking cessation programs.* **L. Alexander, EdD**, C. Baker, MPH and M. Butler, MPH

Board 4 — *Identifying high risk Wholesale and Retail Trade industry subsectors.* **H. Chun, ScD** and V. Anderson, PhD

Board 5 — *From Research to Practice: Responding to Occupational Violence in Social Work Education.* **R. Bolton, MSW, MA** and J. Perlstein, MSW

Board 6 — *Student immunization requirements of U.S. health professional schools.* **M. C. Lindley, MPH**, S. A. Lorick, DO, MPH, J. R. Spinner, MPH, A. Krull, MPH, RN, G. Mootrey, DO, MPH, F. Ahmed, MD, PhD, MPH, R. Myers, ARNP, MSN, and R. A. Strikas, MD

Board 7 — *Biomechanical Analysis of Work-related postures in the Housekeeping Staff of a Health Care Facility.* **K. Salwe, MBBS, MPH**, S. Kumar, PhD, DSc, FRSC, and J. Hood, RN, MPH, COHN-S

Board 8 — *Using the socioecological model as a conceptual framework for early return to work: Challenges, pitfalls, and future directions for occupational health research and practice.* **B. Blagooee, MD, MPH, PhD** and F. A. Obuseh, DrPH, MPH, MS

Board 9 — *Social Media at NIOSH: Evaluation of the Science Blog.* **V. Sublet, PhD** and C. Spring, MA

Board 10 — *Using Media to Promote Non-Corporate Science.* **D. Egilman, MD, MPH**

Sunday, November 7, 2010

3:30 PM - 4:30 PM

2046.0 OHS New Members' Meeting - All welcome!

Colorado Convention Center - Halls A/B

Getting to Know APHA and the OHS section

This session is especially for newcomers to the section but everyone is welcome. We will explore the workings of the OHS section and APHA while getting to know each other and the work we do. Please join us in this informal and informative session.

Sunday, November 7, 2010

4:30 PM - 5:30 PM

2068.0 – Concurrent Poster Session. Occupational health and safety posters: Hazardous occupations

Colorado Convention Center - Halls A/B

Board 1 — *Occupational Asthma among Electronics Workers: A Meta-analysis.*

A. Mendy, MD, A. Nnadi, MD, M. A. Melchior, MPH, and J. Gasana, MD, PhD

Board 2 — *Understanding work disability prevention among rural healthcare workers: A comprehensive literature review.* R. L. Franche, PhD, **E. Murray, MPH**,

A. Ostry, PhD, Ma, MSc, P. A. Ratner, PhD, RN, FCAHS, H. Harder, EdD, MA, S. Wagner, PhD, MSc, H. Alamgir, MPharm, MBA, PhD, and T. Gilligan

Board 3 — *Assessing Health Concerns & Obstacles to Diesel Exposure Reduction in Vermont Diesel Vehicle Operators.* **M. Marotta**, M. Furman, R. Greenberg, Q. Huang, B. Porter, W. Timbers, J. Yared, T. V. Delaney, PhD, R. Ryan, G. Davis, MD, and J. K. Carney, MD, MPH

Board 4 — *A novel tool to address safety hazards in the home healthcare setting.* **R. R. M. Gershon, DrPH** and J. Pearson, BA

Board 5 — *When Lean Production Methods Kill Worker*. **P. Dooley, MS, CIH, CSP**

Board 6 — Peritoneal mesothelioma found in a mine worker exposed to "tremolite free" asbestos in a Canadian mine. **D. Egilman, MD, MPH**

Board 7 — *Analysis of Motor Vehicle Fatality Investigations among U.S. Firefighters*. **T. D. Smith, MS, CSP, ARM**, K. Kunadharaju, MD, MPH, CHES, and D. M. DeJoy, PhD

Board 8 — *Impact of occupational exposures on lung disease among former atomic energy workers and experiences with an occupational illness compensation program*. **J. K. Welch, MPH**, M. Mikulski, MD, MPH, V. Clotthey, MD, MPH, C. J. Nichols, Z. Wang, N. A. Hoeger, P. Hartley, MB, BCh, MPH, and L. Fuortes, MD, MS

Board 9 — *Pilot testing of S.I.R.E.N-Safety Instruction to Reduce Exposure of Noise and hearing loss: Preliminary findings of firefighters' feedback*. **D. L. Chin, RN, MSN**, S. Phelps, RN, MSN, and O. Hong, PhD, RN

Board 10 — *Using Transparency to Increase Awareness of Chemical Hazards in University Laboratories*. **M. Weil, MPH, Doctoral Student**

4:30 PM - 5:30 PM

2069.0 – Concurrent Poster Session. Occupational health and safety posters - International

Colorado Convention Center - Halls A/B

Board 1 — *Job stress and depression: A study among doctors and nurses in Ulaanbaatar, Mongolia*. **A. Bagaajav**

Board 2 — *Workplace Accidents in Spanish Regions (1999-2008)*. **J. A. Martín Segura, PhD**, J. L. Navarro Espigares, PhD, Prof, Mgr, P. González de la Flor, MD, PhD, A. Ramirez, and I. Martín Fernández, Student

Board 3 — *Region based study on incidence rate of patients' violence toward nurse, nursing support workers, and clerk*. **K. Saeki**, K. Tomioka, N. Okamoto, and N. Kurumatani

Board 4 — *Psychosocial Factors at Work and the Impact on Workers*. **P. González de la Flor, MD, PhD**, J. L. Navarro Espigares, PhD, Prof, Mgr, R. Carmona Vigo, Dr, J. M. Jover Casas, MD, and J. A. Martín Segura, PhD

Board 5 — *Using certification as a performance improvement strategy to measure, achieve, recognize and sustain injection safe care delivery*. **M. Schwartz, EDD, MSN, RN** and A. Anderson

Board 6 — *Coastal areas of Karachi: Health problems in salt farmers*. **M. Yousuf, FACULTY**

Board 7 — *Effective Behavior Change Communications to Prevent Malaria Morbidity and Mortality in Global Workforces.* **L. Shallenberger, DrPH, MPA** and M. Diara, MD, MBA, MPH

Board 8 — *Workplace injuries among the Bangladeshi labour migrants in the Gulf region.* **R. Saifi, PhD**

Board 9 — *Risks of bloodborne pathogen transmission to Zambian healthcare workers.* **E. K. Phillips, RN, MPH, PhD**, J. C. Jagger, MPH, PhD, M. Chung, BS, G. Parker, MBA, and O. Simwale, MPH

Board 10 — *Occupational noise and cardiovascular risk by exaggerated blood pressure response at exercise in exposed workers.* **F. C. Fahmy, Dr**, F. Abass, Prof, and K. Newir, Prof

4:30 PM - 5:30 PM

2070.0 – Concurrent Poster Session. Occupational health and safety posters III

Colorado Convention Center - Halls A/B

Board 1 — Preventing Work-Related Low Back Injuries: An Evidence-Based Approach. **J. Snodgrass, PhD, MPH, OTR/L**

Board 2 — Respirator use Evaluation in Acute care California Hospitals (REACH): An assessment of respirator policies and practices for H1N1 influenza in the health care setting. **S. Beckman, MPH**, L. Brosseau, ScD, M. D'Alessandro, PhD, S. Goldmacher, RN, MSN, NP, J. Halpin, MD, MPH, J. Kim, MD, MPH, B. Materna, PhD, CIH, J. McNary, MPH, CIH, D. Novak, PhD, RN, DSN, C. Oke, VMD, MPH, J. Zipprich, PhD, MS, and R. Harrison, MD, MPH

Board 3 — Green Jobs Training: DWEJ and the UAW Collaboration. **L. Vazquez, MPH** and K. Paul, BS

Board 4 — Workplace health protection from "suspected" harmful materials. **B. Kukovitskiy, PhD**

Board 5 — Financial barriers to asthma care among individuals with work-related asthma. **G. Knoeller, MPH**, J. M. Mazurek, MD, MS, PhD, and J. Moorman, MS

Board 6 — Introducing the clergy occupational distress index (CODI). **S. M. Frenk, MA**, E. G. Hooten, MSPH, ScD, S. A. Mustillo, PhD, and K. G. Meador, MD, ThM, MPH

Board 7 — Actual state of home-care waste disposal at home-visit nursing stations in Japan: A descriptive questionnaire survey. **Y. Ikeda, Ph D**

Board 8 — Long Term Effects on Health of Workers Exposed to Mercury. **P. González de la Flor, MD, PhD**, J. L. Navarro Espigares, PhD, Prof, Mgr, J. M. Jover Casas, MD, J. A. Martín Segura, PhD, Prof, E. Hernandez Torres, and L. Palma Zamora

Board 9 — Revisions needed in the Hazard Communication standard to improve worker and community access to critical information on toxicity of chemical products used in the workplace and home. **M. Karstadt, PhD** and A. Frank, MD PhD

Board 10 — Exploring Hazards in an Art School. **J. Schaeffer, MS**, S. Stoke, MD, K. Stinson, MSPH, and R. Witter, MD, MSPH

4:30 PM - 5:30 PM

**2071.0 – Concurrent Poster Session. Occupational Health
Disparities Institute posters**

Colorado Convention Center - Halls A/B

Board 1 — *Evaluating Work-Related Violence Among Taxi Drivers Using Two Data Sources.* **C. Chaumont Menéndez, PhD** and H. Amandus

Board 2 — *Effective Dissemination of an Ergonomically –Modified Blueberry Rake.* **S. Wyckoff, BS**, J. J. May, MD, L. A. Hawkes, MS, B. Ginley, MPH, and M. Rowland, MD, MPH

Board 3 — *Occupational heat illness among Latino farmworkers in North Carolina.* **M. C. Mirabelli, PhD**, S. A. Quandt, PhD, R. Crain, BA, J. G. Grzywacz, PhD, E. N. Robinson, BA, Q. M. Vallejos, MPH, and T. A. Arcury, PhD

Board 4 — Environmental Justice and Migrant Workers. **J. Patel, MPH** and J. Gasana, MD PhD

Board 5 — *Risk perception and acceptance regarding workplace safety among Hispanic immigrant workers.* **K. Hoffmeister, BS, BA**

Board 6 — *Employment frustration among Asian American immigrants: Physical and mental health consequences of job denial in the U.S. labor force.* **B. de Castro, PhD, MSN/MPH, RN**, T. Rue, MS, and D. T. Takeuchi, PhD

Board 7 — *Exploring race, sex, and age-adjusted rates of suicide across agricultural and construction workers.* **E. Nowacki, BA**, L. Stallones, MPH, PhD, P. Y. Chen, PhD, and T. Doenges, MS

Board 8 — *An intervention to reduce occupational exposure to methicillin-resistant Staphylococcus aureus in communal showers for pork production workers.* **K. R. Leedom Larson, DVM, MPH**, T. C. Smith, PhD, and K. Donham, DVM, MS

Board 9 — *Environmental and Occupational Health Disparities Among Hispanic/Latino Populations .* **N. Guerra, MD, MPH**

Board 10 — *Occupational Asthma due to Exposure to Epoxy Resins and Acid Anhydrides in Low Socioeconomic Status.* **I. Manneh, Pharmacist**, C. Dowdye, BS, M. A. Melchior, MPH, and J. Gasana, MD, PhD

Sunday, November 7, 2010

6:00 PM - 8:00 PM



OHS Social Hour - All Welcome!

Come join us as we celebrate and mingle to get our 2010 meeting in gear. This promises to be great food and the nicest group of people in Health and Safety so you don't want to miss this. There will be a short program that will start at 7 PM. This event is free!

Los Cabos II
1525 Champa St.
Denver, CO 80202
303-595-3232

<http://www.loscabosii.com/>

6:00 PM - 9:00 PM

Health Activist Dinner

The Occupational Health Service Institute (OHSI) UIC Medical Center

Maggiano's Little Italy 500 16th St.
(3 blocks from the Convention Center)
Tickets \$50

Sponsored by

American Medical Student Association, Committee of Interns and Residents/SEIU Healthcare, Doctors for Global Health, Physicians for Human Rights, Physicians for a National Health Program, Physicians for Reproductive Choice and Health, Physicians for Social Responsibility, The Physicians Forum, Doctors Council SEIU, St.John's Well Child and Family Centers, Project for Nuclear Awareness, APHA Socialist Caucus

Monday, November 8, 2010

8:30 AM – 10:00 AM

3055.0 – Oral Session. Blue / Green #1: Producing green and working safe

****Special intersectional track on environmental and occupational justice****

Colorado Convention Center – Room 707

Moderator: Karla R. Armenti, ScD
New Hampshire Department of Health and Human Services, Health Statistics and Data Management Section



8:30 AM — *Green jobs, safe jobs – more than a buzz word.* **S. Hecker, MSPH**, L. Delp, PhD, K. Riley, MPH, PhD and M. Willis, MBA

8:45 AM — *Understanding chemical exposures to environmentally preferable cleaning products (EPP) and the health of vulnerable worker populations.* **N. J. Simcox, MS**, T. Morse, PhD, CPE, and J. D. Meyer, MD, MPH



9:00 AM — *Building a green jobs alliance where safety and training comes first* **S. D. Beard, IH**

9:15 AM — *Teaching Green Chemistry.* **V. Velazquez**, M. P. Wilson, PhD, MPH

Monday, November 8, 2010

8:30 AM – 10:00 AM

3056.0 – Oral Session. Young Workers' Health and Safety

Colorado Convention Center – Room 709

Moderator:

Derek G. Shendell, DEnv, MPH
Department of Environmental and Occupational
Health, UMDNJ-SPH (and EOHSI)

8:30 AM — *Protecting Youth at Work: Surveillance to Practice in Massachusetts.* **L. Davis, ScD, EdM** and B. Vautin, MPH

8:45 AM — *Are teens who work in family-businesses more likely to engage in hazardous tasks and be injured compared with other working teens.* **K. Zierold, PhD, MS** and H. Anderson, MD

9:00 AM — *Effect of child Labor violations on reported injuries among working youth: Results of school based surveys.* **J. Dal Santo, DrPH**, J. M. Bowling, PhD, and T. Harris, JD

9:15 AM — *Evaluation of a hearing conservation program for farm youth: A 16-year follow-up.* **B. Marlenga, PhD**, R. L. Berg, MS, J. G. Linneman, BA, D. J. Wood, AuD, CCC-A, S. Kirkhorn, MD, M. J. Knobloch, MPH, CPH, S. K. Broste, MS, and W. Pickett, PhD

Monday, November 8, 2010

8:30 AM – 10:00 AM

**3056.1 – Round Table. Occupational Health and Safety
Roundtable Presentations I: Occupational Medicine***

Colorado Convention Center – Korbel Ballroom 2A

Moderator: Rachel Rubin, MD, MPH
Division Chair, Occupational and Environmental
Medicine, John H. Stroger, Jr. Hospital of Cook
County



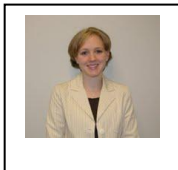
1 — *Give Me a Test and I'll Give You a Diagnosis: Why We Should Have Diagnostic Tests to for Pesticide Overexposures.* **M. Keifer, MD, MPH** and A. K. Liebman, MA, MPA

2 — *Saving lives by changing practices: Protecting workers by integrating occupational and environmental medicine into the primary care setting.* **A. K. Liebman, MA, MPA**, S. Manock, MD, MS, K. Hoffman, and A. Andino

3 — *California - Baja California Integrated Pesticide Illness and Exposure Prevention Project.* **M. Welton, MPH, MA**



4 — *Teaching from afar: The online "International Program in Occupational Health Practice" for education in low-resource countries.* **N. Wagner, MD, PhD**, L. A. Nickels, MEd, D. Hryhorczuk, MD, MPH, and M. Cunningham-Hill, MB, ChB, FFOM



5 — *Is it just another employee complaint? A Case Study of Occupational Illness in the Workplace.* **J. L. Houlroyd, MSPH**

6 — *Diagnosis of Whole-Body Vibration (WBV) related Disorders in Transportation Workers.* **E. Johannig, MD, MSc**

*** This session will have short oral presentations [7-10 minutes] in the first 60 minutes. The remaining 30 minutes will be available for participants to visit the presenters at their round tables to discuss their work and related topics.**

Monday, November 8, 2010

10:30 AM – 12:00 AM

3110.0 Oral Session - The role of popular arts & education methodologies in democratizing and enhancing community-based participatory research for environmental and occupational justice

Organized by: Environment

Endorsed by: Community Health Workers, Occupational Health and Safety

Organizer and Moderator: John Sullivan, MA

10:30 AM - Putting our stories on the map: Participatory mapping and popular education for environmental justice in freight transport-impacted communities in the San Francisco Bay Area. **E. Moore** and C. Garzon, MS

10:45 AM - "Behind the Fence" forum theater: A community-driven popular arts performance partnership to address lupus and environmental Justice. **E. M. Williams, PhD, MS**

11:00 AM - Culturally appropriate methods to collect data and give voice to Brazilians in Massachusetts: The experience of Project C.O.B.W.E.B. **C. E. Siqueira, MD, ScD**

11:15 AM - Alton Park/Piney Woods Neighborhood Environmental College: A project to address environmental justice and health disparities in two underserved minority neighborhoods in Chattanooga, TN **F. Haire, Community Liaison** and G. Spring

Monday, November 8, 2010

10:30 AM – 12:00 AM

3138.0 – Oral Session. Health and Safety in Healthcare

Colorado Convention Center – Room 707

Moderator: Nancy N. Menzel, PhD, RN
School of Nursing,
University of Nevada, Las Vegas

8:30 AM — *Healthcare triad of safety—patient, provider and environment.* **J. Williams, MD, MPH**



8:45 AM — *Occupational exposures to antineoplastic agents in a hospital hematology-oncology department.* **D. Stover** and C. Achutan, PhD

9:00 AM — *Adherence to personal protective equipment use among physicians-in-training during the 2009 influenza A (H1N1) pandemic — Utah, 2009.* **M. de Perio, MD**, S. Brueck, MS, CIH, and C. Mueller, MS

9:15 AM — *Engaging healthcare workers in occupational health and safety education.* **T. McKenna, DNSc, RN**

Monday, November 8, 2010

10:30 AM – 12:00 AM

3139.0 – Oral Session. Blue / Green #2: Making green jobs safe jobs

****Special intersectional track on environmental justice and occupational justice****

Colorado Convention Center – Room 709

Moderator: Walter Jones, MS
Occupational Safety and Health Division, Laborers Health and Safety Fund of North America



10:30 AM — Intersection of Occupational Health & Safety with Green Jobs. J. Frederick, MS, J. Hughes, MPH, J. B. Zimmerman, PhD, MS, M. P. Wilson, PhD, MPH, and J. S. Morawetz, ScM



10:50 AM — Creation of Model Safety and Health Training for Green Jobs. J. Hughes, MPH, J. S. Morawetz, and J. Frederick, MS

11:10 AM — Union and community based training initiatives for green economy jobs: A comparison of two training projects. A. Fendley, MPH and J. Frederick, MS

11:30 AM — A multiple stakeholder evaluation of green construction training: Assessing the effectiveness of green courses for minority workers. S. A. Sarpy, MS, PhD and K. Vaughn

Monday, November 8, 2010

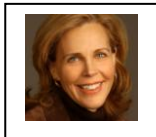
10:30 AM – 12:00 AM

3140.1 – Round Table. From Farm to Fork - a roundtable on Health & Safety in Food Production and Food Service*

Colorado Convention Center – Korbel Ballroom 1D

Moderator: Coby Jansen, MPH
School of Public Health and Community Medicine,
University of Washington

1 — *Occupational Injuries among Latino Immigrant Poultry and Manual Workers: Study Design and Descriptive statistics.* **D. Mora, MPH**, T. A. Arcury, PhD, J. G. Grzywacz, PhD, H. Chen, PhD, J. Blocker, MS, and S. A. Quandt, PhD



2 — Organization of crop and horse breeding work in Central Kentucky and its impact on occupational health outcomes for Latino farmworkers. **J. Swanberg, PhD** and J. Miller, BA

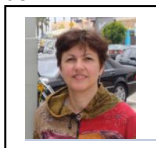
3 — *Farm-related factors associated with asthma in U.S. farm operators: Results from the 2006 Farm and Ranch Safety Survey.* **P. Schleiff, MS**, J. M. Mazurek, MD, MS, PhD, and G. Syamlal, MBBS, MPH



4 — *A Campus-Community Partnership for Migrant Tomato Workers' Health.* A. Andino, K. Hoffman, S. Manock, MD MS, A. K. Liebman, MA, MPA, J. Florence, MD, S. Loury, RN, PhD and **K. Silver, SM, DSc**

5 — *Health and Safety in San Francisco's Chinatown Restaurants: Findings from an Observational Survey.* A. L. Salvatore, DrPH, M. E. Gaydos, MPH, A. Morales, MPH Candidate, **P. T. Lee**, S. S. Liu, C. Chang, MPH, DrPH candidate, N. Krause, MD, PhD, M. Minkler, DrPH, and R. Bhatia, MD, MPH

6 — *Workers' Experience of Slipping in US Limited Service Restaurants.* **S. K. Verma, MBBS, MPH**, W. R. Chang, PhD, T. K. Courtney, MS, CSP, D. A. Lombardi, PhD, E. Huang, PhD, M. J. Brennan, MS, M. A. Mittleman, DrPH, and M. Perry, ScD



7 — *Workplace Injuries of Foodservice Workers: Time to Revisit OSHA Exemption for Recordkeeping.* **P. Vossenas, MPH** and F. E. Mirer, PhD

* This session will have short oral presentations [7-10 minutes] in the first 60 minutes. The remaining 30 minutes will be available for participants to visit the presenters at their round tables to discuss their work and related topics.

Monday, November 8, 2010

10:30 AM – 12:00 AM

3131.3 Oral Session - International Perspectives in Occupational and Environmental Health

Organized by International Health jointly with Environmental Health and Occupational Health Section

Organizer:

Elvira Beracochea MD. MPH

Moderator:

Cara Breedon

10:30 AM — Promoting Environmental Health and Exposure Characterization in Rapidly Urbanizing Areas of a less Developed Country in Africa: Collaborative Short-Course Training and Pilot Field Research. **Derek G. Shendell, DEnv, MPH**

10:50 AM — Impacts of environmental and social certifications for flower production in Ecuador. **Homero Harari, MSc** and Susan Woskie PhD

11:10 AM — Funding of occupational health development in Southern Africa – Whose Agenda? **Rajen Naidoo, MD, PhD**

11:30 AM — War is also a determinant of environmental and occupational health in developing countries: Case studies from the Arab region. **Iman Nuwayhid, MD, DrPH**

Monday, November 8, 2010

12:30 PM - 1:30 PM

3176.0 – Concurrent Poster Session. Occupational Health and Safety Posters - International

Colorado Convention Center - Halls A/B

Board 1 — *Factors Affecting to Subjective Physical Symptoms of Dental Technician.* D. Lee, PhD, C. Y. Kim, MD, PhD, and **K. S. Lee, MD, PhD**

Board 2 — *Medicolegal Aspects of Childhood Labor Injuries.* R. Abdel Maaboud, K. Abdel Aal, H. Thabet, and **M. Farid**

Board 3 — *Child labor in Southern Brazil: Occupational characteristics and contribution to the economy.* **L. A. Facchini, Dr.**, A. Fassa, Dr, M. Dall'Agnol, Dr, and F. D. S. Maia, Dr

Board 4 — *Evaluating Health Effects Among Adolescent Pesticide Applicators.* **A. Ismail, PhD**, G. M. Abdel Rasoul, MD, and D. Rohlman, PhD

Board 5 — *International Collaborations to Provide Control Solutions for Workplace Silica Exposures.* **C. Beaucham, MPH**

Board 6 — *Mitigating malaria risk for extractive industry workers operating in endemic countries.* **M. Diara, MD, MBA, MPH**, N. C. Wojcik, MS, and R. Dockins, MD, MPH

Board 7 — *Cost of shift work on employee health and performance: Can organizations afford to ignore the consequences?* **N. Tustin, Doctoral Candidate**

Board 8 — *An effective sleep break for nurses on late-night duty.* **S. Oriyama**

Board 9 — *Occupational Hazard Exposures, Protective Behaviors and Related Factors of Physicians in Taiwan.* **F. L. Chen, PhD**, Y. L. Chen, MS, Y. W. Lin, PhD, P. Y. Chen, PhD, and C. S. Tang, PhD

Board 10 — *Workers' Compensation and Moral Damage: A Methodological Proposal.* **J. L. Navarro Espigares, PhD, Prof, Mgr.**, J. A. Martín Segura, PhD, Prof, and P. González de la Flor, MD, PhD

12:30 PM - 1:30 PM

3177.0 – Concurrent Poster Session. Occupational Health and Safety Posters IV

Colorado Convention Center - Halls A/B

Board 1 — *Smokeless Tobacco Use and US Employment Sectors: 1987-2005.* **N. Dietz, PhD**, D. J. Lee, PhD, L. E. Fleming, MD, PhD, W. G. LeBlanc, PhD, K. E. McCollister, PhD, K. L. Arheart, EdD, A. J. Caban-Martinez, MPH, and E. P. Davila, MPH

Board 2 — *Crash Outcome Data Evaluation System (CODES): A potential tool for evaluation of work-related motor vehicle crashes.* **S. Thygeson, PhD, MSPH, CIH**, R. M. Merrill, PhD, MPH, L. Cook, PhD, MStat, and A. Thomas

Board 3 — *Lifestyle Behavior Change after Repeated HRA Participation: A Structural Equation Modeling Approach.* **V. L. Simpson, RN, MSN, CHES**

Board 4 — *Obesity and Cardiovascular Fitness Levels in the US Workforce.* **J. D. Clark, PhD**, J. E. Lewis, PhD, W. G. LeBlanc, PhD, K. L. Arheart, EdD, D. Lee, PhD, A. J. Caban-Martinez, MPH, E. Davila, PhD, and L. E. Fleming, MD, PhD

Board 5 — *Application of PRECEDE-PROCEED Model to Study Protective Behavior among Health Care Workers.* **C. Y. Liao, MS**, F. L. Chen, PhD, P. Y. Chen, PhD, Y. W. Lin, PhD, H. C. Liu, MS, and C. S. Tang, PhD

Board 6 — *Early versus late diagnostic MRI for low back pain among Washington State Workers: Evaluation of one-year health status.* **J. M. Graves, MPH**, D. Fulton-Kehoe, PhD, MPH, T. Wickizer, PhD, and G. M. Franklin, MD, MPH

Board 7 — *Implementation of a portable cholinesterase monitoring kit in a clinical setting: A Normalization Process approach.* **R. Treadwell, MPH** and M. Keifer, MD, MPH

Board 8 — *Occupational Asthma among Bakers: A Meta-analysis.* **C. Giraneza, BS**, N. Applrys, BS, M. A. Melchior, MPH, and J. Gasana, MD, PhD

Board 9 — *Meta-analysis of exposure to pesticide and asthma.* **C. Dowdye, BS**, I. Manneh, Pharmacist, J. Patel, MPH, M. A. Melchior, MPH, and J. Gasana, MD, PhD

Board 10 — *Needlestick legislation makes an impact on hospital injury rates.* **E. K. Phillips, RN, MPH, PhD**, M. R. Conaway, PhD, G. Parker, MBA, J. L. Perry, MFA, and J. C. Jagger, MPH, PhD

Monday, November 8, 2010

12:30 PM – 2:00 PM

3231.0 – Oral Session. Topics in Construction Safety and Health

Colorado Convention Center – Room 707

Moderator and Discussant: Ki Moon Bang, PhD,
Division of Respiratory Disease Studies, Centers for
Disease Control and Prevention, National Institute
for Occupational Safety and Health

12:30 PM — *National Construction Agenda: Surveillance Strategic Goal* **K. M. Bang, PhD**

12:45 PM — *Data Sources and Limitations for Construction Safety and Health Surveillance.* **X. S. Dong, DrPH**

1:00 PM — *Putting the P in Surveillance (StP): Tracking and Investigating Construction Deaths for Prevention.* **R. Harrison, MD, MPH**, D. Harrington, MPH, and L. E. Styles, MPH



1:15 PM — *A comparison of union and non-union construction workers responses based on the Don't Fall For It ladder safety intervention project.* **J. Gittleman, PhD, MRP** and E. Haile, MS



1:30 PM — *Characteristics of the construction industry in China and suggestions.* **X. Jing** and B. Buchholz

Monday, November 8, 2010

12:30 PM – 2:00 PM

3232.0 – Oral Session. Updates in Occupational Epidemiology

Colorado Convention Center – Room 709

Moderator and Discussant: David A. Lombardi, PhD
Center for Injury Epidemiology, Liberty Mutual
Research Institute for Safety

12:30 PM — *Associations of occupation, job control, and job demands with intima-media thickness: The Multi-Ethnic Study of Atherosclerosis (MESA).* **K. Fujishiro, PhD**, A. V. Diez Roux, MD, PhD, P. Landsbergis, PhD, S. L. Baron, MD, MPH, R. G. Barr, MD, DrPH, J. D. Kaufman, MD, MPH, J. F. Polak, MD, and K. Hinckley-Stukovsky, MS

12:45 PM — *Health effects of exposure to beryllium in the manufacture of conventional munitions.* **M. Mikulski, MD, MPH**, S. Leonard, MS, S. Lourens, R. Field, PhD, W. Sanderson, PhD, and L. Fuortes, MD, MS

1:00 PM — *Workplace diversity and psychosocial work characteristics as predictors of low back functioning and job satisfaction among warehouse workers: A multilevel analysis.* A. Hoppe, PhD, MSc, **C. A. Heaney, PhD, MPH**, and K. Fujishiro, PhD



1:15 PM — *A case-crossover study of occupational laceration injuries in pork processing.* **L. Lander, ScD**, G. S. Sorock, PhD, T. L. Stentz, PhD, E. A. Eisen, ScD, M. A. Mittleman, DrPH, R. Hauser, ScD, and M. J. Perry, ScD

Monday, November 8, 2010

12:30 PM – 2:00 PM

3233.0 – Round Table. The big picture: Roundtable on OSH policies and practices*

Colorado Convention Center – Korbel Ballroom 1D

Moderator: Steven Mooser, MPH
Health and Safety Department, Retail, Wholesale
and Department Store Union/UFCW

1 — *Fulfilling the US Chemical Safety Board's full potential. J. S. Morawetz, ScM and J. Frederick, MS*

2 — *Preventing Catastrophic Chemical Accidents--The Role and Impact of the US Chemical Safety Board. M. Gomez, DrPH, MS, CIH*

3 — *Inadequacy of the Contractor Selection Process and its Impact on Worker Health and Safety: The US Chemical Safety Board Xcel Cabin Creek Hydroelectric Plant Investigation. D. Holmstrom, JD, Investigation Supervisor, C. MacKenzie, MS, M. Kaszniak, Engineer, V. Parasram, MPH EOH, and R. McClure, CIH*

4 — *Persistent dangers of hot work: Policy recommendations to address the increase in occupational incidents across the US. V. Parasram, MPH EOH, H. Cohen, MA, and C. MacKenzie, MS*

5 — *Cross Sector Collaboration: Enhancing Public Health Preparedness through Occupational Health and Safety. K. Olenlager, MPH and S. Serrao, MBBS, MPH*



6 — *Corporate Social Responsibility and Occupational Health in Healthcare Organizations. J. L. Navarro Espigares, PhD, Prof, MS and M. G. Blanco Garcia, MS*

*** This session will have short oral presentations [7-10 minutes] in the first 60 minutes. The remaining 30 minutes will be available for participants to visit the presenters at their round tables to discuss their work and related topics.**

Monday, November 8, 2010

2:30 PM – 4:00 PM

3335.0 – Oral Session. OSHA and Injury Statistics; Addressing Workplace Policies that Discourage Worker Reporting

Colorado Convention Center – Room 703

Moderator: Wendy Hord,
New York State United Teachers

2:30 PM — *A view from the workplace: The United Steelworkers' current experience with employer policies, programs and practices that discourage injury reporting and keep injury rates low.* **J. Frederick, MS**



2:50 PM — *How to measure success: Is OSHA identifying effective worksite health and safety programs or promoting the underreporting of job injuries and illnesses (and are OSHA strategies to address underreporting problems working)?* **N. Lessin, MS**

3:10 PM — *New ways to measure safety performance.* **B. Hoyle**

3:30 PM — *Recommendations to OSHA.* **J. Frederick, MS; N. Lessin, MS; Bill Hoyle and session participants**

Monday, November 8, 2010

2:30 PM – 4:00 PM

3336.0 – Oral Session. Dying on the job: Analysis and discussion of work-related fatalities

Colorado Convention Center – Room 702

Moderator: Katherine Kirkland, MPH
Association of Occupational & Environmental Clinics

2:30 PM — *Fatalities Among Foreign-Born Workers in the U.S., 1992-2007.* **C. Chaumont Menéndez, PhD**

2:45 PM — *Green jobs and worker fatalities: Causes and prevention. The California Fatality Assessment and Control Evaluation (FACE) program.* **L.E. Styles, MPH**, R. Harrison, MD, MPH, H. Cierpich, BS, and J. Rogge, MD, MPH

3:00 PM — *Fatal Occupational Injuries in Oil and Gas Extraction Industries: Comparing Outcomes of Hispanic and Non-Hispanic Workers.* **J. Janocha** and S. Richardson

3:15 PM — *Changing skilled trades health and safety culture from within to reduce the risk of fatalities.* **K. King, MS, PE, BCEE**, J. Daltuva, MA, MSW, M. Keyserling, PhD, CSP, CPE, and T. Robins, MD, MPH

Monday, November 8, 2010

2:30 PM – 4:00 PM

**3306.0 – Oral Session. Greenwashing vs. green products:
Science, state policy, and workers impact**

Organized by Environment Session

Endorsed by Occupational Health and Safety Section

Organizer:

Claire Barnett, MBA

Moderator:

C. Denise Bowles, IH, MOSHE, CET

2:30 PM — Work-related asthma is associated with cleaning. **E. Pechter, MPH, CIH**

2:50 PM — Science behind Green Cleaning Product Standards. **C. Baldwin**

3:10 PM — Greenwashing vs. Green Products. **A. Culver, MS**

3:30 PM — Comparison of State Policies. **C. Barnett, MBA**

Monday, November 8, 2010

2:30 PM – 4:00 PM

**3328.0 Standing Together for Rights and Working Conditions:
Union Organizing and Occupational Safety and Health**

Moderator: Stephen Mooser, MPH

2:30 PM — Roles of Health and Safety in Labor Organizing. **S. Mooser, MPH**

2:50 PM — Workplace Health and Safety Organizing in the Informal Economy:
Government/Grassroots Collaborations Targeting Hard-To-Reach Workers **T.
Robinson, PhD**

3:10 PM — Hotel Workers Organize for Health and Safety: One Day Longer,
One Day Safer. **P. Vossen, MPH**

Monday, November 8, 2010

4:30 PM – 6:00 PM

**3411.0 – Oral Session. The Gulf -Crisis in the Workplace: Health
and Safety Disasters and Federal Agency Responses**

Colorado Convention Center – Four Seasons Ballroom 1

Moderators:

Kate McPhaul, PhD, MPH, RN,
Work and Health Research Center,
University of Maryland Baltimore

Discussant:

Linda Rae Murray, MD, MPH,
Chief Medical Officer, Cook County
Department of Public Health

Guest Presenters:

D. Michaels, PhD, MPH, Assistant Secretary of Labor

J. Howard, MD, JD, Director of NIOSH

G. R. Wagner, MD, Deputy Assistant Secretary for Policy MSHA

6:00 PM – 7:30 PM

Monday, November 8, 2010

330.0 OSH Membership Meeting - All welcome!

CCC - Korbel Ballroom 1E

Moderator: K. McPhaul, PhD, MPH, RN
School of Nursing, University of Maryland

PROGRAM AT A GLANCE

Occupational Health & Safety Section

Protecting Workplace Health and Safety

Time	SATURDAY November 6, 2010 Colorado Convention Center(CCC) - Room 603
9:00 AM - 6:00 PM	<p style="text-align: center;">9 am – 6 pm 2010 National Health and Safety Summit</p> <p style="text-align: center;">A New Era for Safety and Health Activism</p> <p style="text-align: center;">Organized by Protecting Workers Alliance to bring together activists from Labor, Public Health, Environmental, Family Rights, Immigrant Rights and COSH groups</p> <p style="text-align: center;">Maximize the current momentum to develop a common strategy for policy change</p> <p style="text-align: center;">Discussions will include:</p> <ul style="list-style-type: none">- Legislative update: What we can do to strengthen worker protections under OSHA- Advocacy related to Ergonomic Standards and immigrant workers- Promotion of rights for victims and families <p style="text-align: center;">Special Lunch Session: OSHA in the New Era</p>

PROGRAM AT A GLANCE
Occupational Health & Safety Section

Protecting Workplace Health and Safety

	SUNDAY November 7, 2010 Colorado Convention Center (CCC)
Time	
7:30 AM - 11:30 AM	7:30 - 9:30 Breakfast AOEC! 8:30 - 11:30 212.0 OHS Membership Meeting - All welcome! CCC - Korbel Ballroom 2A
11:30 AM - 2:00 PM	Committee Meetings Colorado Convention Center - Korbel Ballroom 2A - IH committee, - Young Worker Health and Safety Network committee, - Skit committee
2:00 PM	Holding Mother Earth Sacred Exhibit Opening Earl Dotter and Cindy Becnel Booth 1786 Exhibit Hall-Open until Wednesday Nov 10!
2:30 PM - 3:30 PM	<u>2031.0</u> Occupational health and safety posters I - CCC Halls A/B <u>2032.0</u> Occ. Health and Safety posters : Health effects Research - CCC Halls A/B <u>2033.0</u> Occupational Health and Safety posters - Surveillance - CCC Halls A/B <u>2034.0</u> Occupational Health and Safety posters II - CCC Halls A/B
3:30 PM - 4:30 PM	2046.0 OHS New Members' Meeting - All welcome! CCC Korbel Ballroom 2B
4:30 PM - 5:30 PM	<u>2068.0</u> Occ. Health and safety posters: Hazardous occupations - CCC - Halls A/B <u>2069.0</u> Occupational Health and safety posters - International - CCC - Halls A/B <u>2070.0</u> Occupational health and safety posters III - CCC - Halls A/B <u>2071.0</u> Occupational Health Disparities Institute posters - CCC - Halls A/B
6:00 PM - 9:00 PM	6:00 - 8:00 PM <u>OHS Social Hour - All Welcome! - FREE!</u> Los Cabos II 1525 Champa St. Denver, CO 80202 303-595-3232 http://www.loscabosii.com/ 6:00 - 9:00 PM Health Activist Dinner The Occupational Health Service Institute (OHSI) UIC Medical Center Maggiano's Little Italy 500 16th St. (3 blocks from the Convention Center) Tickets \$50

PROGRAM AT A GLANCE

Occupational Health & Safety Section


Protecting Workplace Health and Safety

Time	MONDAY November 8, 2010 Colorado Convention Center (CCC)
8:30 AM - 10:00 AM	<p><u>3055.0</u> Blue / Green #1: Producing green and working safe **Special intersectional track on environmental and occupational justice** - CCC 707</p> <p><u>3056.0</u> Young Workers' Health and Safety - CCC 709</p> <p><u>3056.1</u> Occupational Health and Safety Roundtable Presentations I: Occupational Medicine - CCC Korbel Ballroom 2A</p>
10:30 AM - 12:00 PM	<p><u>3110.0</u> Oral Session - The role of popular arts & education methodologies in democratizing and enhancing community-based participatory research for environmental and occupational justice - <i>Environment Section</i></p> <p><u>3138.0</u> Health and safety in healthcare - CCC 707</p> <p><u>3139.0</u> Blue / Green #2: Making green jobs safe jobs **Special intersectional track on environmental justice and occupational justice** - CCC 709</p> <p><u>3140.0</u> From Farm to Fork - a roundtable on health & safety in food production and food service - CCC Korbel Ballroom 1D</p> <p><u>3131.3</u> Oral Session - International Perspectives in Occupational and Environmental Health (<i>organized by IH, OH and ENV Sections</i>)</p>
Poster Session 12:30 PM - 1:30 PM	<p><u>3176.0</u> Occupational health and safety posters - International - CCC Halls A/B</p> <p><u>3177.0</u> Occupational health and safety posters IV - CCC Halls A/B</p>
12:30 PM - 2:00 PM	<p><u>3231.0</u> Topics in construction safety and health - CCC 707</p> <p><u>3232.0</u> Updates in Occupational Epidemiology - CCC 709</p> <p><u>3233.0</u> The big picture: Roundtable on OSH policies and practices - CCC Korbel Ballroom 1D</p>
2:30 PM - 4:00 PM	<p><u>3335.0</u> OSHA and injury statistics; addressing workplace policies that discourage worker reporting - CCC 703</p> <p><u>3336.0</u> Dying on the job: Analysis and discussion of work-related fatalities - CCC 702</p> <p><u>3306.0</u> Greenwashing vs. green products: Science, state policy, and workers impact <i>Organized by Environment Section, Endorsed by Occupational Health and Safety Section</i></p> <p><u>3328.0</u> Standing Together for Rights and Working Conditions: Union Organizing and Occupational Safety and Health</p>
4:30 PM - 6:00 PM	<p><u>3411.0</u> Crisis in the workplace: Respose to The Gulf and other health and safety disasters - CCC Four Seasons Ballroom 1</p>
6:00 PM - 8:00 PM	<p><u>330.0</u> OSH Membership Meeting - All welcome! CCC - Korbel Ballroom 1E</p>

PROGRAM AT A GLANCE

Occupational Health & Safety Section

Protecting Workplace Health and Safety

Time	TUESDAY November 9, 2010 Colorado Convention Center
8:30 AM - 10:00 AM	<p><u>4050.0</u> Occupational Health Disparities Institute: Overview of OHD and Future Directions - CCC 401</p> <p><u>4051.0</u> Occupational respiratory disease research - CCC 402</p> <p><u>4052.0</u> Roundtable on OSHA: updates, initiatives, and policies - CCC Korbel Ballroom 3C</p>
10:30 AM - 12:00 PM	<p><u>4080.0</u> Social Justice, It's What's Not for Dinner: Understanding and Overcoming Food System Disparities to Promote Health - <i>APHA Special Session - A collaboration by the Food & Environment Working Group, ENV, OHS, IH, CBPHC, PHEHP, EPI, and SW</i></p> <p><u>4113.0</u> Workplace hazardous chemical policy and control - CCC 712</p> <p><u>4114.0</u> Occupational health in developing countries: A cue for social justice: <i>**Special intersectional track on environmental and occupational justice**</i> - CCC 603</p> <p><u>4114.1</u> Occupational Health and Safety Roundtable Presentations II - CCC Korbel Ballroom 2A</p> <p><u>4090.0</u> Improving environmental health and occupational safety and health through training programs, capacity building, partnerships, and public health education <i>**Special intersectional track on environmental justice and occupational justice**</i></p>
12:00 PM - 2:00 PM	 <p>4128.0 OSH Awards Luncheon CCC 605/607</p>
2:30 PM - 4:00 PM	<p><u>4301.0</u> Young worker health and safety : Young worker fatalities - CCC 712</p> <p><u>4302.0</u> Occupational Health Internship Program student presentations - CCC 704</p> <p><u>4303.0</u> Roundtable on worker training and education - CCC Korbel Ballroom 2A</p> <p><u>4267.0</u> Food systems: Seeking environmental, occupational, and social justice from farm to fork - <i>**Special intersectional track on environmental justice and occupational justice**</i></p>
4:30 PM - 6:00 PM	<p><u>4374.0</u> Disease prevention and social justice: the case of asbestos - CCC 712</p> <p><u>4375.0</u> Roundtable discussion: Value of workplace health promotion for OSH – CCC Korbel Ballroom 2C</p> <p><u>4376.0</u> Occupational injuries: understudied workforces and industries - CCC 608</p>
6:00 PM - 8:00 PM	<p>426.0 OHS Planning meeting for 2011 All welcome! CCC 710</p>
8:00 PM - 11:00 PM	<p>Fund Raising Dance –All welcome!!! Lannie's Clocktower Cabaret 16th Street Mall at Arapahoe Street 1601 Arapahoe Street, Denver 80202 303-293-0075 http://lannies.com/</p>

PROGRAM AT A GLANCE
Occupational Health & Safety Section

Protecting Workplace Health and Safety

Time	WEDNESDAY November 10, 2010 Colorado Convention Center
8:30 AM - 10:00 AM	<u>5069.0</u> Addressing undercounting in the BLS annual survey (SOII) - CCC 702 <u>5070.0</u> Occupational Health Disparities Institute: Addressing disparities through participatory research - CCC 704 <u>5070.1</u> Occupational Health and Safety Roundtable Presentations III - CCC Korbel Ballroom 2B
10:30 AM - 12:00 PM	<u>5123.0</u> Collaborating with workers to improve safety and health: reports on participatory projects - CCC Korbel Ballroom 4D <u>5124.0</u> Updates on states: State-based occupational health surveillance roundtable - CCC Korbel Ballroom 2C <u>5125.0</u> International health and safety - CCC 601 <u>5094.0</u> Oral Session - The Public Health Implications of the Gulf Oil Disaster - <i>APHA Special Session</i>
12:30 PM - 2:00 PM	<u>5176.0</u> Occupational health surveillance: New methods, new data - CCC 711 <u>5177.0</u> NIOSH ERCs - Next Steps for Advancing Health and Safety - CCC 702

Tuesday, November 9, 2010

8:30 AM – 10:00 AM

4050.0 – Oral Session. Occupational Health Disparities Institute

Colorado Convention Center – Room 401

Moderator: Sherry L. Baron, MD MPH
Coordinator Occupational Health Disparities,
National Institutes for Occupational Safety and
Health, CDC

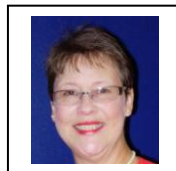
8:30 AM — *Advancing Occupational Justice: The National Action Summit for Latino Worker Health and Safety.* **D. Berkowitz**, R. K. Sokas, MD, MOH, MSc, D. Cortez, and M. Garrahan, MS



8:45 AM — *Promoting occupational safety and health among Hispanic immigrant workers through effective collaborations.* **M. Flynn, MA**



9:00 AM — *Farmworker housing conditions, public health and social justice: Whither the connections.* **D. Villarejo, PhD** and I. Jacobs, JD



9:15 AM — *Racial and Ethnic Health Disparities In the Workplace: Achieving Equity Among the Insured.* **C. R. Tuttle, MPH, PhD** and L. C. Trahan, MPH, CHES

Tuesday, November 9, 2010

8:30 AM – 10:00 AM

**4051.0 – Oral Session. Occupational Respiratory Disease
Research**

Colorado Convention Center – Room 402

Moderator:

Michael Kosnett, MD, MPH
Department of Medicine, and
Department of Environmental and
Occupational Health, University of
Colorado Denver, and Colorado
School of Public Health

Panelist:

Annyce Mayer, MD, MSPH, Division of
Environmental and Occupational
Health Sciences, National Jewish
Health

8:30 AM — *Risk and prevention of respiratory infectious disease transmission on aircraft.* **A. Mayer, MD, MSPH**

8:45 AM — *Emerging biomarkers of pulmonary injury and their potential application for biomonitoring of nanomaterial workers.* **M. Kosnett, MD, MPH**



9:00 AM — *Need and opportunity for addressing asthma in the workplace.* **L. Stillman, MM**, P. Hoppin, ScD, and M. Jacobs, MPH

9:15 AM — *Determining a safe exposure level for diacetyl-containing butter flavoring.* **D. Egilman, MD, MPH**

Tuesday, November 9, 2010

8:30 AM – 10:00 AM

4052.0 – Round Table. Roundtable on OSHA: Updates, Initiatives, and Policies*

Colorado Convention Center – Korbel Ballroom 3C

Moderator: Diane Bush, MPH
Labor Occupational Health
Program, University of California,
Berkeley

1 — *OSHA Recordkeeping: An Update on New Initiatives.* **E. Handelman, RN, MEd, FAAOHN**

2 — *OSHA NEP on Amputations: An Evaluation.* **L. Forst, MD, MPH** and S. Brandt-Rauf, JD, MA

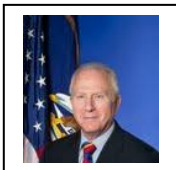
3 — *OSHA Current Activities Update.* **S. Witt**

4 — *Ergonomic Successes Through OSHA's Cooperative Programs.* **B. Lawrence**



5 — *Breaking the Paradigms Leading to Grain Engulfment.* **D. McDonnell**

6 — *Improve Workers Safety and Health Performance through the OSHA Challenge Program.* **J. Annis, Team Leader**



7 — *Controlling Silica and Hexavalent Chromium Exposures in Foundries.* **S. Witt**

8 — *Conflicts between OSHA and EPA/HUD Lead Safety for Renovation, Repair, and Painting Training.* **J. C. Camplin, MS, CSP, CPEA**

*** This session will have short oral presentations [7-10 minutes] in the first 60 minutes. The remaining 30 minutes will be available for participants to visit the presenters at their round tables to discuss their work and related topics.**

Tuesday, November 9, 2010

10:30 AM – 12:00 PM

4080.0 Social Justice, It's What's Not for Dinner: Understanding and Overcoming Food System Disparities to Promote Health

APHA Special Session - A collaboration by the Food & Environment Working Group, ENV, OHS, IH, CBPHC, PHEHP, EPI, and SW

Organizer:

Rebecca A. Klein, MS

Moderator:

David Fukuzawa



10:35 AM — Cultivating illness, seeding change: Injustices threatening farm workers' health and possibilities for transformation. **D. Villarejo, PhD**

10:50 AM — When communities collide: Corporate concentration of agriculture, associated health threats and opportunities for positive transformation. **B. D. Andrews, CSC, JD**

11:05 AM — Challenging injustices and improving consumers' health by putting the SOUL back into our food system: Sustainable Organic Urban and Local. **L. Redmond**

11:20 AM — Food sovereignty is food justice: International implications of the U.S. food system and opportunities for global justice. **A. Joshi, MS**

11:35 AM — Infrastructure Imperatives for Affordable, Healthy, Green and Fair Food. **R. Salvador, PhD, MS**

Tuesday, November 9, 2010

10:30 AM – 12:00 PM

4113.0 – Oral Session. Workplace Hazardous Chemical Policy and Control

Colorado Convention Center – Room 712

Endorsed by: Environment Section

Organizer:

Gail Bateson, MS
Worksafe

Moderator:

Patricia Quinlan, MPH, CIH, Division of Occupational and Environmental Medicine, University of California San Francisco



10:30 AM — *Use of Control Banding in Relation to Chemical Policy Reform.* **T. Morse, PhD, CPE**, A. L. Bracker, MPH, and N. Simcox, MPH, CIH



10:50 AM — *Expediting OSHA's PEL-setting Process Using Risk Assessment Data Generated by Other Agencies: Lessons from California.* **F. Schreiber, JD** and G. Bateson, MS

11:10 AM — *Case against OSHA Permissible Exposure Limits [PELs].* **Eileen Senn MS, CIH**, P. Dooley, MS, CIH, CSP

Tuesday, November 9, 2010

10:30 AM – 12:00 PM

**4114.0 – Oral Session. Social Justice and International
Occupational Health:**

****Special intersectional track on environmental and
occupational justice****

Colorado Convention Center – Room 603

*Organized by: Occupational Health and Safety, Environment, International
Health and Social Work Sections*

Moderator: Nancy Kieger, PhD,
Department of Society, Human Development and Health,
Harvard University School of Public Health



10:30 AM — *Occupational health in developing countries: A
cue for social justice.* **R. R. Habib, PhD, MPH, MOHS**

10:45 AM — *Introduction: Social Justice and the Health and Lives of Workers in
Context – An Ecosocial Perspective.* **N. Krieger, PhD**

11:00 AM — *Migrant Agricultural Workers in Lebanon - Our Harvest of Shame.* **R.
Habib, PhD, MPH, MOHS**

11:15 AM — *Life in the Valley of Death: A Cross-Sectional Study of the Structural
Determinants to Haitian Farm worker Exposure to Pesticides in the Dominican
Republic.* **F. Ona, MPH, PhD, Z. Bonilla, PhD, MPH, M. Delgado, and R. M.
Goodman, PhD**

11:30 AM — *Informal sector work in Southern Africa – social justice and workers'
health.* **R. Naidoo, MD, PhD**

Tuesday, November 9, 2010

10:30 AM – 12:00 PM

**4114.1 – Round Table. Occupational Health and Safety
Roundtable Presentations II***

Colorado Convention Center – Korbel Ballroom 2A

Moderator: Katherine Kirkland, MPH
Association of Occupational & Environmental
Clinics

1 — *Development and test of a safety climate and occupational injury model.*
T. D. Smith, MS, CSP, ARM



2 — *Characteristics of Effective Health and Safety Committees.* **T. Morse, PhD, CPE**, A. L. Bracker, MPH, M. Cook, MPH, J. Goyzueta, MPH, and G. Y. Liao, MS



3 — *Meeting the occupational safety and health needs of individuals with disabilities employed in sheltered workshops.*
R. Dewey, MPH

4 — *Environmental tobacco smoke exposure among Louisiana adults who work in bars and casinos.* **J. Klink, MPH**, N. Lawhorn, MPP, L. Brown, PhD MPH, D. Lirette, MS, PhD, MT (ASCP), J. Diaz, MD, DrPH, C. Y. Hu, MSPH, ScD, F. A. Ragan, PhD, DABCC, and C. Contreras, MPH



5 — *Physical activity to prevent low back pain in an occupational cohort.* **M. Thiese, PhD, MSPH**, K. T. Hegmann, MD, MPH, A. Garg, PhD, CPE, C. A. Porucznik, PhD, MSPH, T. K. Behrens, PhD, and M. J. DeWitt, PhD

6 — *Computer-related musculoskeletal disorders among clerical workers: Do we still have a problem?* **L. Delp, PhD** and P. C. Wang, PhD

7 — *One foot in the 19th century, one in the 21st: Paper mill health and safety participatory study results.* **T. M. Lippin, MEd**, T. H. McQuiston, DrPH, A. Yoder, S. Sallman, K. Bradley-Bull, MPH, J. Frederick, MS, N. Lessin, MS, L. Anderson, and J. Geneen, MPA

8 — *Do EPA Tier II-compliant diesel engines reduce lobstermen's diesel exhaust exposure?* A. Piedmont, T. J. Smith, MPH, PhD, R. Herrick, SD, and **A. Backus, MS**

* **This session will have short oral presentations [7-10 minutes] in the first 60 minutes. The remaining 30 minutes will be available for participants to visit the presenters at their round tables to discuss their work and related topics.**

Tuesday, November 9, 2010

10:30 AM – 12:00 PM

4090.0 Improving environmental health and occupational safety and health through training programs, capacity building, partnerships, and public health education

****Special intersectional track on environmental justice and occupational justice****

Organized by: Environment

Endorsed by: American Indian, Alaska Native and Native Hawaiian Caucus, Epidemiology, Occupational Health and Safety

Moderator and Organizer: Allen Dearry, PhD

10:30 AM — Improving respiratory health outcomes for socio-economic disadvantaged populations through education and outreach to clinicians and public health professionals on environmental contributors to illness. **P. Schenck, MPH**, R. DeBernardo, MD MBA MPH, S. Conrath, Ph D, MPH, L. Kolb, MPH, W. A. Turner, MA and E. Storey, MD, MPH

10:50 AM — Role and impact of the Alpha Goes Green Initiative on educating underserved communities on environmental justice and related health issues **S. Wilson, MS, PhD**

11:10 AM — Whatever works: Advocacy, enforcement, and evidence in environmental justice cases. **C. Zachek, MPH**

11:30 AM — Climate Change Health Assessment: A Novel Approach for Alaska Native Communities. **M. Brubaker, MS**, J. Bell, MS, J. Berner, MD and J. Warren, PE

Tuesday, November 9, 2010

12:00 PM – 2:00 PM

SPECIAL EVENT!



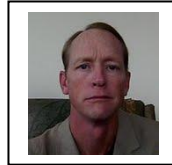
4128.0 - OSH Awards Luncheon

Colorado Convention Center – Room 605/607

Come to the Section's Awards Lunch, to honor outstanding individuals in our field, and stay for "The Skit" that links current events, music and comedy. This year's awardees are:



Sherry Baron, MD, MPH
Alice Hamilton Award



Tom O'Connor
Lorin Kerr Award



Wally Reardon, BA
Tony Mazzocchi Award



Jeong-ok Kong, MD
*International Health
and Safety Award*



Stephen A. Mitchell, BA
Tony Mazzocchi Award

Tuesday, November 9, 2010

2:30 PM – 4:00 PM

4301.0 – Oral Session. Young Worker Health and Safety: Young Worker Fatalities

Colorado Convention Center – Room 712

Cosponsor: School Health Education and Services, Social Work

Moderator: Mary E. Miller, MN, RN
Employment Standards Program, Washington
State Department of Labor & Industries

2:30 PM — *Adolescent worker fatalities involving child labor and OSHA violations in North Carolina (1991- 2008)* **K. J. Rauscher, ScD, MA** and C. W. Runyan, PhD

2:50 PM — *Case analysis of a young worker fatality: Focus on prevention* . **S. B. Arbury, RN, MPH, COHN-S**

3:10 PM — *Cause and Prevention of Young Worker Fatalities.* **E. Weiss**

Tuesday, November 9, 2010

2:30 PM – 4:00 PM

**4302.0 – Oral Session. Occupational Health Internship Program
student presentations**

Colorado Convention Center – Room 704

Moderator: Linda Delp, PhD
Labor Occupational Safety & Health Program,
University of California Los Angeles

2:30 PM — *Student Presentations from the Occupational Health Internship Program (OHIP)* **S. Jacobs, MPH, CHES**, L. Delp, PhD, R. Harrison, MD, M. London, MS, and J. Lipscomb, PhD, RN

2:45 PM — Heat Illness and Chemical Exposure in the Carwash Industry of Los Angeles, California. **A. Fehrenbracher**, MPH Candidate, **M. Rangel**, B.A. in Anthropology

3:00 PM — Ergonomic Risks for Airport Baggage Handlers at South West Airways in Oakland and at LaGuardia. **W. Tang, MPH**

3:15 PM — Shoulder and Back Injuries of Pavement Breakers. **D. Flores, MPH**

3:30 PM — Occupational Hazards of Waste and Recycling Workers. **C. Clarke, MPH**

3:45 PM — Occupational and Environmental Health Hazards of Oil Refineries in Southern California. **C. Ng, MPH Candidate**

Tuesday, November 9, 2010

2:30 PM – 4:00 PM

4303.0 – Round Table. Roundtable on Worker Training and Education*

Colorado Convention Center – Korbel Ballroom 2A

Moderator: Dorothy Wigmore, SM, OHS
Consultant and educator

1 — *Disaster Response Training for Vulnerable Populations.* **J. Lee** and D. L. Weinstock, MS



2 — *Evaluating the OSHA Safety Tips card "Working safely in trenches"* **D. E. Eggerth, PhD**

3 — *Charlas (chats) in workers' centers: Dialogue and conflict to promote social justice.* **J. Zanoni, PhD, MLR**

4 — *Buyer beware: Personnel selling nail guns know little about the injury risk associated with the tools they are selling.* **H.J. Lipscomb**, J. Nolan, D. Patterson, M. Fullen, and B. Takacs

5 — *An evaluation of a training program: Preparing the Home Health Care workforce for pandemic influenza.* **K. L. Levin, RN, MPH, CHES**

6 — *Changing the parameters of occupational safety and health training and education programs - using small group activities to identify job hazards and develop action plans.* S. Bobb, MPH and **G. Stella, BS**



7 — *Using photovoice to examine the health concerns of workers at a horse racetrack.* **J. Kiesler, MD** and L. Vaughn, PhD

8 — *What do you see? What do you hear? How do we give voice and vision to those on the margins as we do our health and safety work?* M.D. Catlin, BS BA, K. Flaherty, L. Vasquez, and **D. Wigmore, SM**

*** This session will have short oral presentations [7-10 minutes] in the first 60 minutes. The remaining 30 minutes will be available for participants to visit the presenters at their round tables to discuss their work and related topics.**

Tuesday, November 9, 2010

2:30 PM – 4:00 PM

**4267.0 Food systems: Seeking environmental, occupational,
and social justice from farm to fork**

****Special intersectional track on environmental justice and
occupational justice****

Organized by: Environment

Endorsed by: Epidemiology, Occupational Health and Safety

Organizer and Moderator: Roni Neff, PhD, MS

2:30 PM — Cooking Up Occupational Injustice: Poor Wages and Working Conditions among San Francisco's Chinatown Restaurant Workers. **A. L. Salvatore, DrPH**, P. Tau Lee, S. S. Liu, C. Chang, MPH, DrPH(cand), M. E. Gaydos, MPH, M. Minkler, DrPH, R. Baker, MPH, R. Bhatia, MD, MPH and N. Krause, MD, PhD

2:50 PM — Negative perceptions of the food environment and unhealthy dietary patterns: Findings from the Philadelphia area. **S. C. Lucan, MD, MPH, MS** and N. Mitra, PhD

3:10 PM — Using a community-led intervention to reduce pesticide exposure in farmworker families: Translating research to practice. **S. A. Quandt, PhD**, J. G. Grzywacz, PhD, R. d'Agostino, PhD, M. C. Mirabelli, PhD, J.W. Talton, MS, R. Crain, BA, J. Tapia and T. A. Arcury, PhD

3:30 PM — Agricultural Justice Project: Emerging labor standards for sustainable agriculture. **M. Reeves, PhD**

Tuesday, November 9, 2010

4:30 PM – 6:00 PM

**4374.0 – Oral Session. Disease Prevention and Social Justice:
The Case of Asbestos**

Colorado Convention Center – Room 712

Organizer:

Linda Reinstein
Asbestos Disease Awareness
Organization

Moderator:

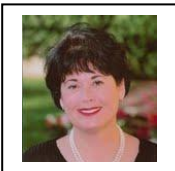
Sharry Erzinger, DrPH
Health and Behavioral Sciences,
University of Colorado Denver

4:30 PM — *Case Study of Asbestos: History and Epidemiology.* **R. Lemen, PhD**



4:45 PM— *Case Study of Asbestos: Clinical Medicine.* **A. Frank, MD PhD**

5:00 PM— *Case Study of Asbestos: Global Implications, Legislative Actions and Substitutions.* **B. Castleman, ScD**



5:15 PM— *Case Study of Asbestos: Education and Advocacy.* **L. Reinstein**

Tuesday, November 9, 2010

4:30 PM – 6:00 PM

**4375.0 – Round Table. Roundtable discussion: Value of
workplace health promotion for OSH**

Colorado Convention Center – Korbel Ballroom 2C

Moderator: Deborah McLellan



4:30 — *NIOSH WorkLife Initiative - is it health promotion, health protection, neither, or both?* . L. Punnett, ScD, M. Cherniack, MD, L. C. Chosewood, MD, J. Merchant, MD, DrPH, and G. Sorensen, PhD and **T. Morse PhD**

4:45 — *Worksite health promotion and low wage workers: Promoting health or promoting health disparities?* **C. A. Heaney, PhD, MPH**, S. Toker, PhD, and S. Lou, BA

Tuesday, November 9, 2010

4:30 PM – 6:00 PM

4376.0 – Oral Session. Occupational Injuries: Understudied Workforces and Industries

Colorado Convention Center – Room 608

Moderator: Lezah Brown, PhD
Health Sciences Department,
Illinois State University



4:30 PM — *Cops and Collisions--An investigation of law enforcement traffic safety.* **B. G. Gustafson, MPA** and **T. M. Rice, MPH, PhD**

4:45 PM — *Occupational injuries and illnesses in the solid waste industry: A call for action.* **O. Olorunnishola, MD, MPH**, **A. Kidd-Taylor, DrPH, MSPH**, and **L. Byrd, MSc**



5:00 PM — *Workers' compensation and occupational injury and illness experience for New York State government agency workers 2007 - 2009.* **J. Rosen, MS, CIH** and **M. London, MS**



5:15 PM — *New York taxi drivers: Identification of risk factors for workplace violence using Community Based Participatory Action Research (CBPAR)* **R. L. Reindel, MFS, MPH**, **D. F. Goldsmith, MSPH, PhD**, and **P. Edelsack, MSW**

Tuesday, November 9, 2010

6:00 PM – 8:00 PM

**426.0 – Business Meeting. OHS Planning meeting for 2011 –
All welcome!**

Colorado Convention Center – Room 710

This meeting will start the process to plan for the 2011 APHA meeting. So whether you want to give feedback on this year's program, propose a session for 2011 or want to join the 2011 program committee, be sure to come to this meeting.

8:00 PM – 11:00 PM



SPECIAL EVENT!

Fund Raising Dance –

Lannie's Clocktower Cabaret
16th Street Mall at Arapahoe Street
1601 Arapahoe Street, Denver 80202
303-293-0075

<http://lannies.com/>

Suggested Donation - \$25-50

Wednesday, November 10, 2010

8:30 AM – 10:00 AM

5069.0 – Oral Session. Addressing undercounting in the BLS annual survey (SOII)

Colorado Convention Center – Room 702

Moderator:

Teresa Schnorr, PhD
Division of Surveillance, Hazard
Evaluations and Field Studies, National
Institute for Occupational Safety and
Health

Organizer:

John Ruser, PhD
Office of Safety, Health and Working
Conditions, US Bureau of Labor
Statistics

8:30 AM — *Allegations of Undercounting in the BLS Survey of Occupational Injuries and Illnesses.* **E. Sygnatur, MA** and J. Ruser, PhD

8:545 AM — *Piloting a Multi Datasource Surveillance System for Work-related Amputations and Carpal Tunnel Syndrome.* **D. Bonauto, MD, MPH**, L. Davis, ScD, EdM, R. Harrison, MD, L. Boden, E. Sygnatur, MA, and S. Wuellner, MPH

9:00 AM — *Learning About Reporting By Linking Workers' Compensation and Bureau of Labor Statistics Data.* **L. Boden**, D. Bonauto, MD, MPH, R. Harrison, MD, N. Nestoriak, PhD, and B. Pierce, PhD

9:15 AM — *Employer Interviews: Exploring Differences in Reporting Work Injuries and Illnesses in the Bureau of Labor Statistics Survey of Occupational Injuries and Illnesses and State Workers' Compensation Claims.* **P. Phipps, PhD** and D. Moore, PhD

Wednesday, November 10, 2010

8:30 AM – 10:00 AM

**5070.0 – Oral Session. Occupational Health Disparities Institute:
Addressing disparities through participatory research**

Colorado Convention Center – Room 704

Moderator:

Pamela Vossenias, MPH
Hotel Division, UNITE-HERE Occupational Safety
and Health Program



8:30 AM — *Building community capacity through use of peer-interviewers in community-based participatory research: Advantages and lessons learned.* **S. L. Baron, MD, MPH**, P. A. Gonzalez, MPH, P. Haroon, BA, L. Stock, MPH, and L. Ayala, MPH

8:45 AM — *Developing an occupational health and safety intervention to prevent falls and silica exposure to Latino construction workers through community-based participation.* **S. Shepherd, ScD**, L. S. Azaroff, ScD, M. Brunette, PhD, C. Roelofs, ScD, E. Parker, M. Grullon, and L. Marin

9:00 AM — *Research to action: Chinese immigrant restaurant workers apply popular education and community based research for social justice.* **P. T. Lee**, M. Minkler, DrPH, C. Chang, MPH, R. Baker, MPH, N. Krause, MD, PhD, and A. Salvatore, MPH

9:15 AM — *Recruiting a community-based sample to study occupational injuries in Latino poultry processing workers: Approach and challenges.* **A. Marín, MA**, T. A. Arcury, PhD, L. Carrillo, BS, D. Mora, MPH, and S. A. Quandt, PhD

Wednesday, November 10, 2010

8:30 AM – 10:00 AM

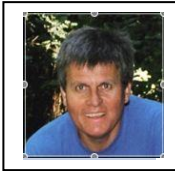
**5070.1 – Round Table. Occupational Health and Safety
Roundtable Presentations III***

Colorado Convention Center – Korbel Ballroom 2B

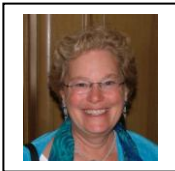
Moderator: Wendy Hord,
New York State United Teachers



1 — Developing culturally tailored interventions in occupational safety and health for Hispanic immigrant workers. **M. Flynn, MA**, P. Check, MPH, D. E. Eggerth, PhD, and K. Hoffmeister, BS,BA



2 — Breaking New Ground with Bilingual Worker Training Materials: Lead's Revenge! *La Venganza del Plomo! **D. Harrington, MPH**, A. Ginzberg, JD, and M. Watters



3 — From Script to Action: The Challenges of Making a Bilingual Training Tool. **A. Ginzberg, JD**

4 — Work-related Asthma Claims in Health Care in Ontario. **G. Liss, MD, MS, FRCPC**, L. Buyantseva, MD, MS, C. Luce, BSc, M. Ribeiro, MD, and S. Tarlo, MB,BS, FRCPC

5 — Workplace noise exposure in orchestra musicians. **J. Romeo, PhD**, P. Landgren, and D. M. Raymond, RN, PhD

6 — Promotores de Salud: The role of community health workers in response to the 2009 H1N1 flu virus in California.

*** This session will have short oral presentations [7-10 minutes] in the first 60 minutes. The remaining 30 minutes will be available for participants to visit the presenters at their round tables to discuss their work and related topics.**

Wednesday, November 10, 2010

10:30 AM – 12:00 PM

5123.0 – Oral Session. Collaborating with workers to Improve Safety and Health: Reports on Participatory Projects

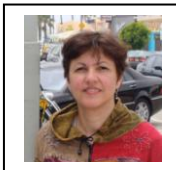
Colorado Convention Center – Korbel Ballroom 4D

Moderator: Andrea Kidd-Taylor, MSPH, DrPH
School of Community Health and Policy,
Morgan State University

10:30 AM — *Building a university-worker partnership to address occupational health and safety concerns among taxi workers in Los Angeles.* **K. Riley, MPH, PhD** and L. Delp, PhD

10:45 AM — *A worker-focused approach to raising health and safety standards for communications tower climbers in New York State: Identifying workers' stake in change.* **P. Rector, Outreach Director** and W. Reardon, 13-year Communications Tower Climber

11:00 AM — *Participatory Research to Assess and Improve Workplace Safety for Home Care Workers.* **H. Moss, MA**, N. Glass, RN, PhD, MPH, L. Nakaishi, BS, MPH, W. K. Anger, PhD, and M. Weinstein, PhD



11:15 AM — *Fair Contract, Healthy Jobs & Dignity at Work: Airline Catering Worker to Worker Campaign.* **P. Vossen, MPH** and P. Tau Lee, BS

Wednesday, November 10, 2010

10:30 AM – 12:00 PM

**5124.0 – Round Table. Updates on states: State-based
Occupational Health Surveillance Roundtable***

Colorado Convention Center – Korbel Ballroom 2C

Moderator: Janie Gittleman, PhD, MRP,
CPWR The Center for Construction Research
and Training

1 — *CDC NIOSH-funded state based surveillance program.* **S. Insera, MPH, REHS**

2 — *Building occupational safety and health capacity in the western states.* **Y. Boudreau, MD, MSPH**, I. Azzam, MD, MPH, and C. Campbell, MS

3 — *Lead Exposure Surveillance in the U.S.: The Adult Blood Lead Epidemiology and Surveillance (ABLES) program.* **W. A. Alarcon, MD, MSC**

4 — *Occupational Health Surveillance in Wyoming 2001-2005.* **K. B. Mulloy, DO, MSCH**, K. Stinson, MSPH, Y. Boudreau, MD, MSPH, L. S. Newman, MD, MA, and J. Helmkamp, PhD, MS

5 — *2008 NH Behavioral Risk Factor Surveillance System: Estimating workplace injuries and workers' compensation claims using a first-time supplement.* **D. L. Skinner, MA, MBA**, S. Knight, MSPH, and K. R. Armenti, ScD

6 — *Moving from Evidence to Collaboration and Action: Identifying and Addressing Causes of Pesticide Over-Exposure in Washington State Agricultural Employees.* **C. Jansen, MPH**, M. Keifer, MD, MPH, B. Nicola, MD, MHSA, FACPM, B. Morrissey, MS, and H. H. Murphy, FNP, MHS

7 — *Toxics reduction and lead poisoning in Massachusetts industry.* **R. Rabin, MSPH**

8 — *Methods and results of a New Hampshire study of unintended, workplace chemical exposures: Subsequent strategies for surveillance-based prevention using poison center information.* **D. Skinner, MA, MBA**, K. R. Armenti, ScD, and M. Heinen, RN, MPH

*** This session will have short oral presentations [7-10 minutes] in the first 60 minutes. The remaining 30 minutes will be available for participants to visit the presenters at their round tables to discuss their work and related topics.**

Wednesday, November 10, 2010

10:30 AM – 12:00 PM

5125.0 – Oral Session. International Health and Safety

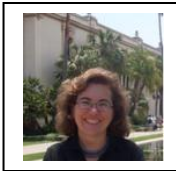
Colorado Convention Center – Room 601

Moderator: Homero Harari, MSc,
Department of Work Environment,
University of Massachusetts Lowell

10:30 AM — *Combined exposures to workplace psychosocial stressors: Estimating the contribution to poor mental health in a sample of working Australians.* **A. D. LaMontagne, ScD, MA, MEd** and R. D'Souza, MBBS, MSc, PhD

10:45 AM — *Minor psychiatric disorders in primary health care workers in Brazil: Differences by function.* **L. A. Facchini, Dr**, A. S. Dilelio, MSC, E. Tomasi, Dr, S. M. Silva, MSC, R. X. Piccini, MSC, E. Thumé, Dr, and D. S. D. Silveira, Dr

11:00 AM — *Discrimination and health: The case of men and women immigrant workers in Spain.* **A. Agudelo-Suarez, MPH**, E. Ronda, MD, PhD, D. Gil-González, PhD, MPH, E. Felt, MPP, C. Vives-Cases, PhD, MPH, C. Ruiz-Frutos, MD, MSc, A. M. García, J. Gómez-Salgado, MPH, and F. G. Benavides, MD, PhD



11:15 AM — *Occupational Health Problems Among Nutmeg Production Workers: A case from Grenada, The Caribbean.* **M. Akpinar-Elci, MD, MPH**, S. Bidaisee, DVM, MSPH, S. Peters, MPH, J. Byonanebye, MPH, and O. C. Elci, MD, PhD, FRSPH

Wednesday, November 10, 2010

10:30 AM – 12:00 PM

5094.0 Oral Session - The Public Health Implications of the Gulf Oil Disaster

APHA Special Session

Moderator: Kenneth Olden

10:30 AM — Occupational risks and health hazards for workers responding to the gulf oil crisis. **J. Howard, PhD**

10:50 AM — Critical role for the public health system in the gulf oil disaster response. **L. White, PhD, DABT**

11:10 AM — Alabama's Public Health Challenges in the Wake of the Gulf Oil Disaster. **D. W. Williamson, MD**

Wednesday, November 10, 2010

12:30 PM – 2:00 PM

5176.0 – Occupational Health Surveillance: New methods, New Data

Colorado Convention Center – Room 711

Moderator: Anthony D. LaMontagne, ScD, MA, MEd
Melbourne School of Population Health, University
of Melbourne

12:30 PM — *Revision of the Occupational Injuries and Illnesses Classification System.* **J. Northwood, PhD** and J. Windau, MS

12:45 PM — *Building a health and wellness Minimum Data Set (MDS) and web-based data collection system for the fire service.* **C. D. Dorsey, MD, MPH**, J. M. Gaitens, PhD, RN, and M. McDiarmid, MD, MPH

1:00 PM — *Public health registry development in the age of the electronic medical record: The case of injured veterans with embedded fragments.* **J. M. Gaitens, RN, PhD**, C. Dorsey, MD, MPH, K. Squibb, PhD, and M. McDiarmid, MD, MPH

1:15 PM — *Race and sex disparities in Worker Compensation coverage for work-related emergency department visits.* **M. Groenewold, PhD, MSPH** and S. L. Baron, MD, MPH

Wednesday, November 10, 2010

12:30 PM – 2:00 PM

5177.0 – Oral Session. NIOSH ERCs - Next Steps for Advancing Health and Safety

Colorado Convention Center – Room 702

Moderator: Karen B. Mulloy, DO, MSCH,
Mountain and Plains Education and Research
Center, Denver Health Center for Occupational
Safety and Health

12:30 PM — *Addressing worker health disparities: NIOSH education and research centers' approaches and outcomes.* **L. S. Newman, MD, MA, L. Conroy, ScD, CIH, S. G. Gerberich, PhD, D. Kotelchuck, PhD, MPH, CIH, and N. S. Seixas, PhD CIH**

***Note on Roundtable Sessions**

* These sessions were organized so we could include as many requests for oral presentations that met our quality standards. We received an unprecedented number of abstracts this year [270 abstracts for 2010 vs. 170 for the 2009 meeting!]. We are excited about the number of professionals who want to contribute to the meeting and want to include as many as possible in our agenda.

The plan for these round-table sessions is the following:

- Each presentation will be assigned a table to display any information you want.
- This could include a poster, handouts of your work/project, photos or other media to communicate your presentation. Although Round-table rooms are not set up with a projector in the room we are planning to have this capability. If slides are necessary for your presentation, we ask that you limit the number of slides to five maximum and bring them on a flash drive.
- Each presenter will be allowed to give a short oral presentation to describe the project and/or the materials at their table. The time allowed will depend on how many presentations there are in your session but will be roughly 7-10 minutes. Moderators will be organizing the session so you will be contacted by them at a later date.
- Participants will be able to visit table displays and listen to presentations during the session.
- Although our section and other meetings have done this type of format before [Poster Plus sessions] we are eager to see how we can make this work effectively. Our section is fortunate to have so many presentation proposals that deserve to be shared with attendees. We are always looking for ways to include as many quality abstracts as possible. We look forward to your participation in these sessions and let us know if there is any way that we can help make this successful.

THE PLANNING COMMITTEE 2010



Mark Catlin BS, BA. – mark.catlin@sieu.org

Mark is an industrial Hygienist with the Service Employees International Union (SEIU). His primary work is providing technical and policy advice for the healthcare industry. He also directs a SEIU peer trainer-led hazardous materials training program and has a broad interest and twenty-five years experience in occupational health and safety training for workers.



**Peter Dooley MS, CIH, CSP – peterdooley@gmail.com
LaborSafe@aol.com**

Peter Dooley MS CIH CSP is a safety and health consultant and President of Laborsafe. He worked for the UAW International Union performing workplace fatality investigations, negotiating health and safety contract language and coordinating educational programs. Previously, he worked for Michigan State University in Labor Education. His work specializes in worker education, workplace evaluations and health and safety solutions. More information is available at laborsafe.org



Sherry Baron, MD, MPH – SBaron@cdc.gov

Sherry is an occupational physician who has worked at the national Institute for Occupational Safety and Health for 22 years. She is coordinator of NIOSH's Occupational Health Disparities program which is developing research and intervention programs to address the disproportionate risk for low wage, immigrant, minority and younger and older workers. She is particularly interested in the development of community based participatory research projects targeting occupational safety and health issues.



Homero Harari, MS – homeroharari@gmail.com

Homero is an Industrial Hygienist and a doctoral student at the Department of Work Environment at the University of Massachusetts Lowell. His work focuses on research of occupational and environmental exposures. He has previously worked in pesticide exposure in workers of flower and banana industry in Ecuador, his home country. His interests include developing international collaborations in Occupational and Environmental Health research and action.



Celeste Moforton, DrPH, MPH –
celeste.monforton@gwumc.edu

Celeste has been a member of APHA since 1997 and is the current OHS Section Chair. She served as the Section's Program Chair from 2002-2004. This will be her 9th annual meeting which she attends for the progressive camaraderie, the diversity of research presentations, and the awards luncheon theatrics.



Lina Lander Sc.D. – llander@unmc.edu

Lina Lander is an Assistant Professor at the University of Nebraska Medical Center, College of Public Health. Her research focuses on occupational injuries and case-crossover methodology. She has previously worked on study evaluating laceration injuries among meatpacking workers. This is Lina's first year on the Program Planning committee and she looks forward to seeing everyone at the OHS section events.



Kerry Souza ScD, MPH – ksouza@cdc.gov

Kerry Souza is an epidemiologist with NIOSH's Division of Surveillance, Hazard Evaluations and Field Studies. She has served the OHS section as a Section Counselor, Secretary, and for the last four years, as a member of the Program Committee. She is constantly looking to improve the quality and cohesiveness of the OHS section program and would like to hear your suggestions and thoughts for next year!