



News & Views

**A Publication of the
American Public Health Association
Student Assembly**

President's Pen

By Tamar Klaiman, Chair APHA-SA

Dear APHA-SA members,

Welcome to the first Student Assembly newsletter of the year! We are looking forward to an exciting year with numerous activities. I wanted to take this opportunity to introduce myself, so you know a bit more about my background and experience.

I am a PhD Candidate in Temple University's Department of Public Health in Philadelphia. I am currently working on my dissertation which is focused on state pandemic influenza preparedness policy. I am also a Research Associate at Temple's Center for Preparedness Research, Education, and Practice (C-PREP) where I am currently working on emergency preparedness and response for special populations. Although emergency preparedness is a newer public health focus area, the same types of research and analyses must be conducted as in other areas of public health. I have found that things I learned from a variety of interest areas can and must be applied to this field of research and practice.

I received my Master's Degree in Public Health, also from Temple University, in May 2006. Prior to entering the MPH program, I worked in Washington, DC at a health services research and health policy organization. I received a Bachelor's Degree in International Affairs from The George Washington University in 2002.

While I was in college I worked on an abortion access hotline for pregnant women in crisis and realized that I wanted to work in a non-clinical health field. I wanted to work on health from a larger perspective that focused on prevention rather than treatment. Public health seemed like the right fit for me. Although it's been a long road from abortion counseling to emergency preparedness and response, part of the reason I enjoy public health so much is because of the flexibility it allows. Throughout one's career, a public health professional can work on a variety of issues, all of which they are passionate about. No one can say public health is boring!

Winter 2008

Editing and Layout By:

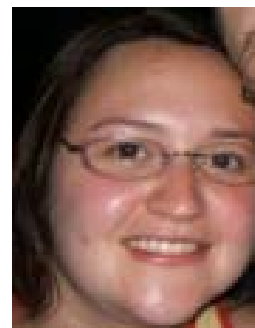
**Olivia Wackowski
and Kimberly Rogers**

INSIDE THIS ISSUE:

President's Pen	1
Campus News	3
Announcements	4
National Public Health Week	6
Contact Info	7



President's Pen cont.



I started my tenure on the Student Assembly four years ago as a member of the first Student Meeting Committee for the 2005 Annual Meeting in Philadelphia. After a successful meeting, I became the Student Meeting Director in 2006. I enjoyed my time as a board member so much that I decided to run for the Chair-Elect position, and I became Chair-Elect in 2007. I have learned a great deal from my fellow Board members and have had the opportunity to work with wonderful people who I would not have met otherwise. I know that I will remain friends with many of the Student Assembly leaders long after my time in the SA.

I look forward to working with the Student Assembly this year on increasing our membership and working to retain members who graduate. Many graduates forget that there is a transitional membership category which allows them to remain members at a subsidized rate. If you have a friend in your program who is not a member, encourage them to become one. Being a member of one of the largest student-run organizations in the country has been incredibly rewarding and I encourage all students to get involved!

Good luck in this New Year and semester! I look forward to working with many of you as the year continues. Please feel free to contact me if you have any questions or concerns!

Regards,
Tamar

Tamar Klaiman, MPH
chair@aphastudents.org



Student Assembly at 2007 Annual Meeting.

Student Assembly board members met during the 2007 APHA Annual Meeting in Washington, DC for annual business meetings. From Left to Right: Allen Suh (Campus Liaison Committee), Teri Malo (Nominations Committee), Lianne Estefan (Current Treasurer), Kristy Siegel (Current Chair-Elect), Monet Silva Caldwell (Programming Committee), Haroun Habib (past Treasurer), Tamar Klaiman, (Current Chair), Olivia Wackowski (Newsletter Committee) and Darren Mays (immediate past Chair).

College of Public Health Student Association (CPHSA) Ushers in the New Year with Human Rights Week 2008

By Jacqueline Leung-Heras, University of Iowa

The College of Public Health Student Association (CPHSA) at the University of Iowa's College of Public Health ushered in the new year with activities in response to the UI's Human Rights Week 2008 celebration, which took place from January 15-January 30, 2008.

This year, the CPHSA collaborated with the University of Iowa Center for Human Rights (UICHR), Women's Resource and Action Center (WRAC) and Global Health Club (GHC) on events to in-

crease awareness of public health and human rights issues. Events for Human Rights Week included distinguished guest speaker Michele Yehieli from Project EXPORT presenting on issues affecting minority groups in Iowa, two screenings of the film "Salud," and a social and potluck event.

The CPHSA and its leaders have worked tirelessly on events promoting public health, human rights, and diversity awareness, and the organization plans

to continue this vision by promoting and increasing involvement in these events at the university and in the local community. The CPHSA is currently collaborating with WRAC on increasing diversity awareness through a Dialogue on Diversity event and Diversity Dialogue circles. For more information on CPHSA's goals and activities, visit <http://www.public-health.uiowa.edu/cphsa>.

World AIDS Day Activities

By Hormuz Nicolwala, Texas, A&M University

World AIDS Day (December 1) serves to focus global attention on the impact of the HIV/AIDS epidemic. Observance of this day provides an opportunity for governments, national AIDS programs, churches, community organizations, and individuals to demonstrate the importance of the fight against HIV/AIDS. This past year, local students at Texas A&M University distributed red HIV ribbons to fellow students and faculty members across campus, while Colorado College's HIV Awareness Club presented a World AIDS Day Gala. The University Of Utah held a panel discussion entitled "Living with HIV/AIDS" to promote HIV awareness, and students at Michigan State University set out to break a world record by adorning trees across the campus with red ribbons. To successfully combat the spread of HIV/AIDS, it is necessary to stimulate involvement on all levels—from individuals to groups, institutions and governments. Persons interested in events in their area should check with local AIDS organizations, as communities can join the fight against AIDS and support our AIDS awareness activities. "Leadership" has been chosen as the theme for World AIDS Day 2008, and as this year begins, make a promise to recognize World AIDS Day through action and learning. For more information, visit <http://www.worldaidscampaign.info>.

APHA Student Assembly Call for Executive Board Applications!

We have an exciting opportunity for you – the chance to apply for a leadership position within the Student Assembly and be a strong voice in helping to shape the future of our organization. It is time for the Executive Board member elections. The Student Assembly has three Executive Board positions on the APHA roster: Chair, Secretary, and Treasurer, and we are currently accepting applications for all three positions.

The positions are as follows:

Chair Elect is a three-year term that begins at the closing of the Annual Meeting in November. The first year, the Chair-Elect represents the Student Assembly on the APHA Intersectional Council, serves as the Executive Committee liaison to the Diversity, Programming, Action, and Opportunities committees of the SA, supports the Chair when he or she cannot be present on important conference calls or in person meetings, and plays a very active role in ensuring the health of the Student Assembly Board. At the end of the 2008 Annual Meeting, this person will become the Chair of the Student Assembly. The Chair serves as the Student Assembly representative on the APHA Board of Directors, serves as the Executive Committee liaison to the Nominations, Advancement, Membership, Development, and Mentoring committees, represents the student assembly at all times, and ensures the health of the SA Board. In the third year, the position becomes Immediate Past Chair and provides guidance and consultation as needed to the SA Board.

The Secretary-Elect is a two-year term that begins at the closing of the Annual Meeting in November. The first year, the Secretary-Elect is responsible for ensuring that board communication occurs with relative ease, updates the list-servs, and maintains contact information. The second year, this person will be the Secretary of the SA and will be responsible for the distribution of the newsletter and maintenance of all SA records.

The Treasurer-Elect is a two year term that begins at the closing of the Annual Meeting in November. The first year, the Treasurer-Elect will spend most of the time learning about the Board finances and working to support the Development Committee (i.e. grants). The second year, the Treasurer year, consists of maintaining all of the SA's finances, generating and approving budgets, and advising the board with regard to spending practices.

To be eligible for any of these positions, you must be a current member of APHA and the SA as of February 1, 2008. If you are interested in applying please contact Teri Malo at nominations@aphastudents.org for a nomination form. Applications are due by Monday, February 22, 2008. Please contact Teri with any questions.

Student Request for Applications – “This is Public Health” Campaign Challenge Deadline February 15, 2008

The Association of Schools of Public Health (ASPH) has issued a request for applications (RFA) for students to develop and execute a “This is Public Health” communications campaign during National Public Health Week, which will be held April 7-13. The RFA challenges students at ASPH-member schools to develop communication campaigns that help raise awareness about public health and how it affects our lives. ASPH is awarding winners with grants up to \$2,000 to execute their ideas.

Students are in a position to share their knowledge and enthusiasm about public health with their communities, including future students of public health, local leaders and the media. ASPH encourages students to get involved and looks forward to seeing innovative approaches to mobilizing people to support public health in April.

The deadline to submit applications is Friday, February 15. Questions can be directed to Ms. Allison Foster at afoster@asph.org or Ms. Laura Biesiadecki at lbiesiadecki@asph.org. Both can be reached by phone at (202) 296-1099. For more details, please see the full RFA at: <http://www.asph.org/userfiles/NPHW%20RFA%20Recommendations%201%2015%2008.pdf>

Good Luck!

Student Assembly Members Invited to Join New APHA Genomics Forum

By Jody Platt, University of Michigan, School of Public Health

Genomics, the study of genes and how they relate to each other and with the environment, is increasingly a public health issue. Expanding research and new applications of genomics in clinical and public health settings provide challenges and opportunities for public health professionals to promote equitable access to genetic services, and prevent misuse of genetic information and technology that may lead to discrimination or stigmatization.

APHA's new Genomic Forum is currently accepting abstracts for the 2008 Annual Meeting and is working through its Policy, Membership and Communications, Special Projects, and Program Committees on activities in workforce development, policy development, advocacy, research, and other areas. Activities are based on the needs and interests of our members. We are committed to providing opportunities for students to be leaders and to contribute actively in the development of the Forum. All are invited to participate in one of the general membership calls and to join any of the Forum's committees. By joining the Genomics Forum, you retain your affiliation with your Section.

Please visit our website to see a schedule of upcoming activities and to sign-up for the Forum: <http://www.GenomicsForum.org>

Celebrate National Public Health Week 2008

The health effects of climate change will take center stage during National Public Health Week, April 7-13, 2008. As part of the week long observance, themed "Climate Change: Our Health in the Balance," APHA will lead the charge in helping people, communities, and families recognize that adapting to climate change and mitigating its impact is critical not just for the health of our planet, but for the health of the people in our nation and around the world.

Changes in our climate are causing more severe weather events. Extreme weather conditions such as heat waves, high winds, snowstorms, floods and

hurricanes have the potential to dramatically affect the health and safety of both individuals and our communities. Changing ecosystems allow for emerging or re-emerging infectious diseases such as dengue and malaria which are changing the spectrum of disease risks affecting populations. In poorer parts of the world, drought and floods often force people to move away from lands no longer producing enough food, often resulting in hunger and malnutrition. Moreover, contaminated drinking water can result in outbreaks of diarrheal diseases leading to dehydration or death.

Few Americans will ever see the melting Greenland ice cap up

close, or interact with an arctic polar bear facing extinction as its habitat melts. But local public health professionals around the country increasingly will be dealing with the impacts of climate change on the ground every day. Join APHA as we work to create a healthier planet. Visit the official National Public Health Week Web site at www.nphw.org to check out the climate change blog and brochure, sign up to be a National Public Health Week partner, or add your week's event to the national calendar. For more information about National Public Health Week, contact kaitlin.sheedy@apha.org.

Student's Role in Global Climate Change: Opportunity to Organize our Voice

By Linda Lindquist, RN BSN

Over the past year, the environmental community has expressed a sense of urgency to reduce the volume of greenhouse gases generated by human activities and to drastically modify human behavior in order to conserve energy. This message has been communicated clearly; however, the direct human health impacts from Global Climate Change have been less articulated.

Students from all disciplines of public health are key stakeholders to engage the public's awareness about health issues that result from unprecedented patterns of extreme warming, such as increases in cardiovascular and respiratory complications, disease transmission, and morbidity and mortality.

Students can choose to incorporate evidence-based research findings into printed materials or share findings at seminars and conferences. Educate your peers, faculty, and staff, or consider replicating technically savvy electronic campaign templates designed by organizations like Cool-cities.us and Focusthenation.org to effectively organize and raise consciousness, engage civic and elected officials, and shape policy.

National Public Health Week is the impetus for student engagement. The same sense of urgency expressed by environmentalists is needed by the public health sector to improve human and population health outcomes from the warming of our communities.

About Our Organization

The American Public Health Association's Student Assembly is the nation's largest student-led organization dedicated to furthering the development of students, the next generation of professionals in public health and health-related disciplines. APHA-SA represents and serves students of public health and other health-related disciplines by connecting individuals who are interested in working together on public health and student-related issues.

Chair: Tamar Klaiman
chair@aphastudents.org

Chair-Elect: Kristy Siegel
chair-elect@aphastudents.org

Past Chair: Darren Mays
past-chair@aphastudents.org

Secretary: Mary Martinasek
secretary@aphastudents.org

Secretary-Elect: Amber Price
secretary-elect@aphastudents.org

Treasurer: Lianne Estefan
treasurer@aphastudents.org

Treasurer-Elect: Brandon O'Hara
treasurer-elect@aphastudents.org

Abstracts Committee: Mariza Hardin
abstracts@aphastudents.org

Action Committee: Lissa Knudsen
and Cherise Wong
action@aphastudents.org

Advancement Committee: Elizabeth
Reitano
advancement@aphastudents.org

Campus Liaison Committee: Allen
Suh
campusliaison@aphastudents.org

Student Assembly



**American Public Health
Association's Student
Assembly**
800 I St. NW
Washington, DC 20001-3710

Check us out on the web!
<http://www.aphastudents.org>

Development Committee: Jamie Lok
development@aphastudents.org

Diversity Committee: Julie Suzuki-
Crumly and Wendy Payne
diversity@aphastudents.org

Membership Committee: Sheliza
Lalani
membership@aphastudents.org

Mentoring Committee: Joy Gamble-
George and Anthony Gurrero-Soto
mentoring@aphastudents.org

Newsletter Committee: Olivia
Wackowski and Kimberly Rogers
newsletter@aphastudents.org

Nominations Committee: Teri Malo
nominations@aphastudents.org

Opportunities Committee: Yoonhee
Ha and James Ignas
opportunities@aphastudents.org

Programming Committee: Monet
Silva Caldwell
programming@aphastudents.org

Student Meeting Director: Bryn Bird
studentmeeting@aphastudents.org

Website Committee: Allan Chiunda
& Suzanna Lee
website@aphastudents.org